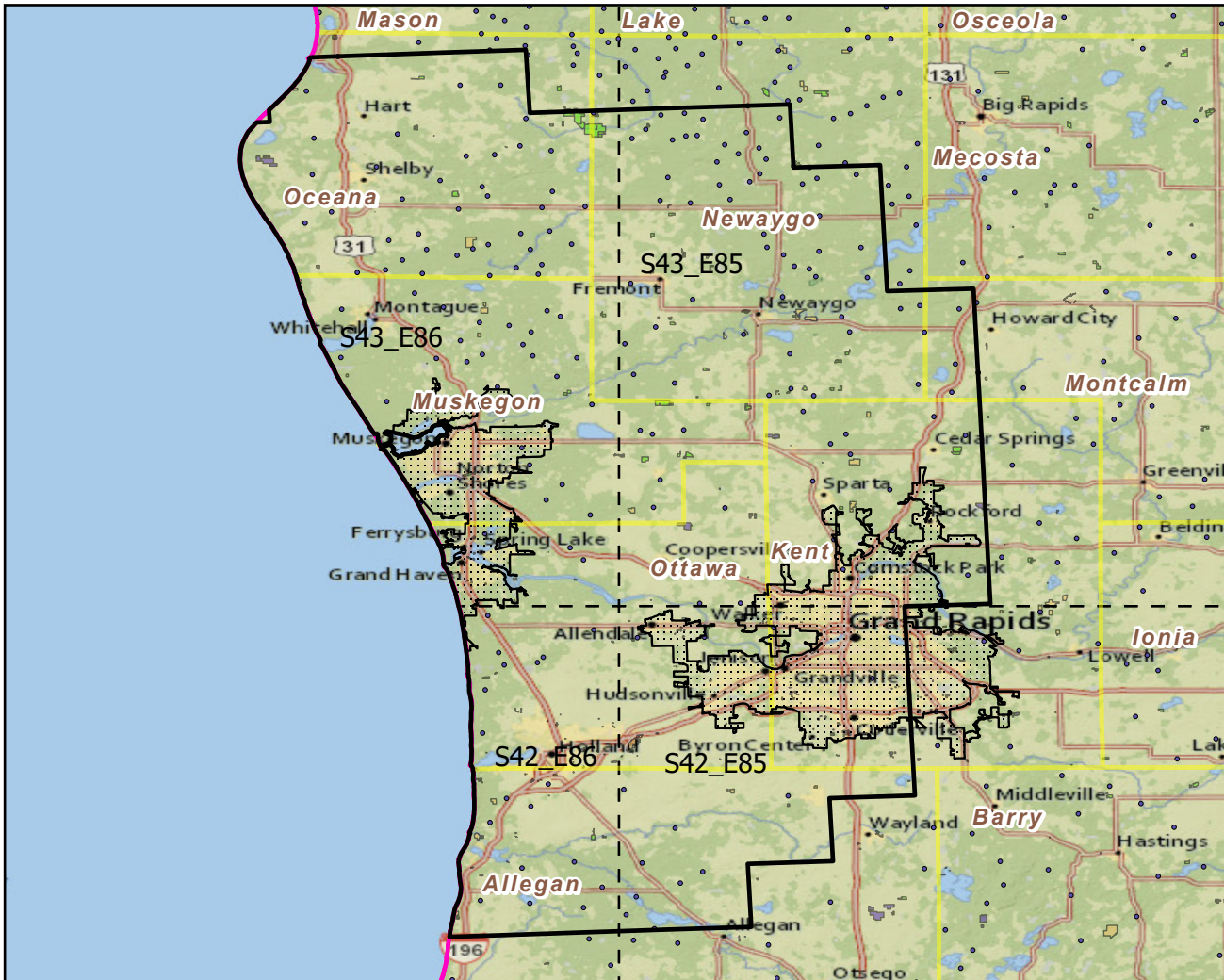
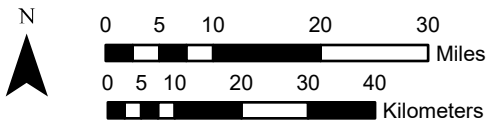


Urban Buffers with Protected Areas and Forest Inventory Plots

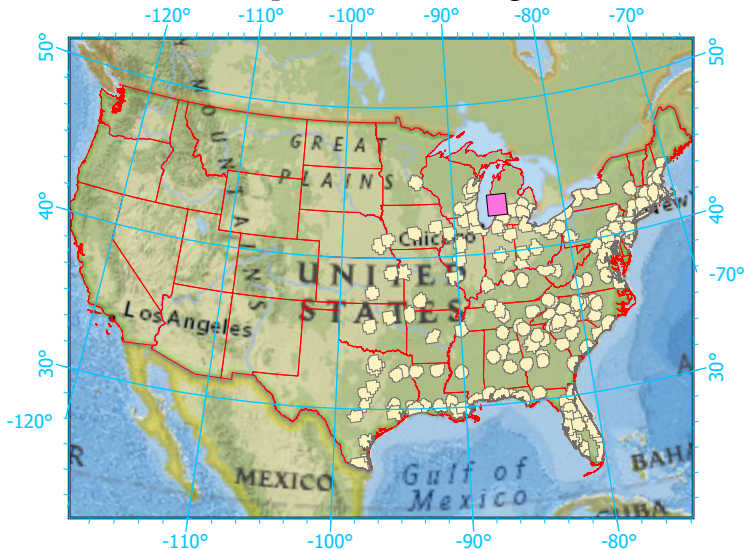


Center: 86°0'20"W 43°9'40"N
 States: Michigan



Scale: 1:1,132,000

Index map (selected in magenta)



- Legend
- Urban Areas Urban Area (sq km)=305
 - Urban Buffers Buffer Area (sq km)=9137
 - State Boundary Percent Urban=4%
 - Forest Inventory Plots Count=187 plots
 - Counties
 - 1x1 Degree Grid
 - Protected Areas**
 - Federal
 - Non-Governmental Organization
 - State

Note: This map page is intended to accompany the forest summary tables, based on the inventory plots shown. Tables are located at <https://www.fs.fed.us/nrs/atlas/combined/resources/summaries/urban/>.