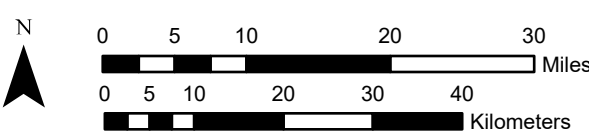
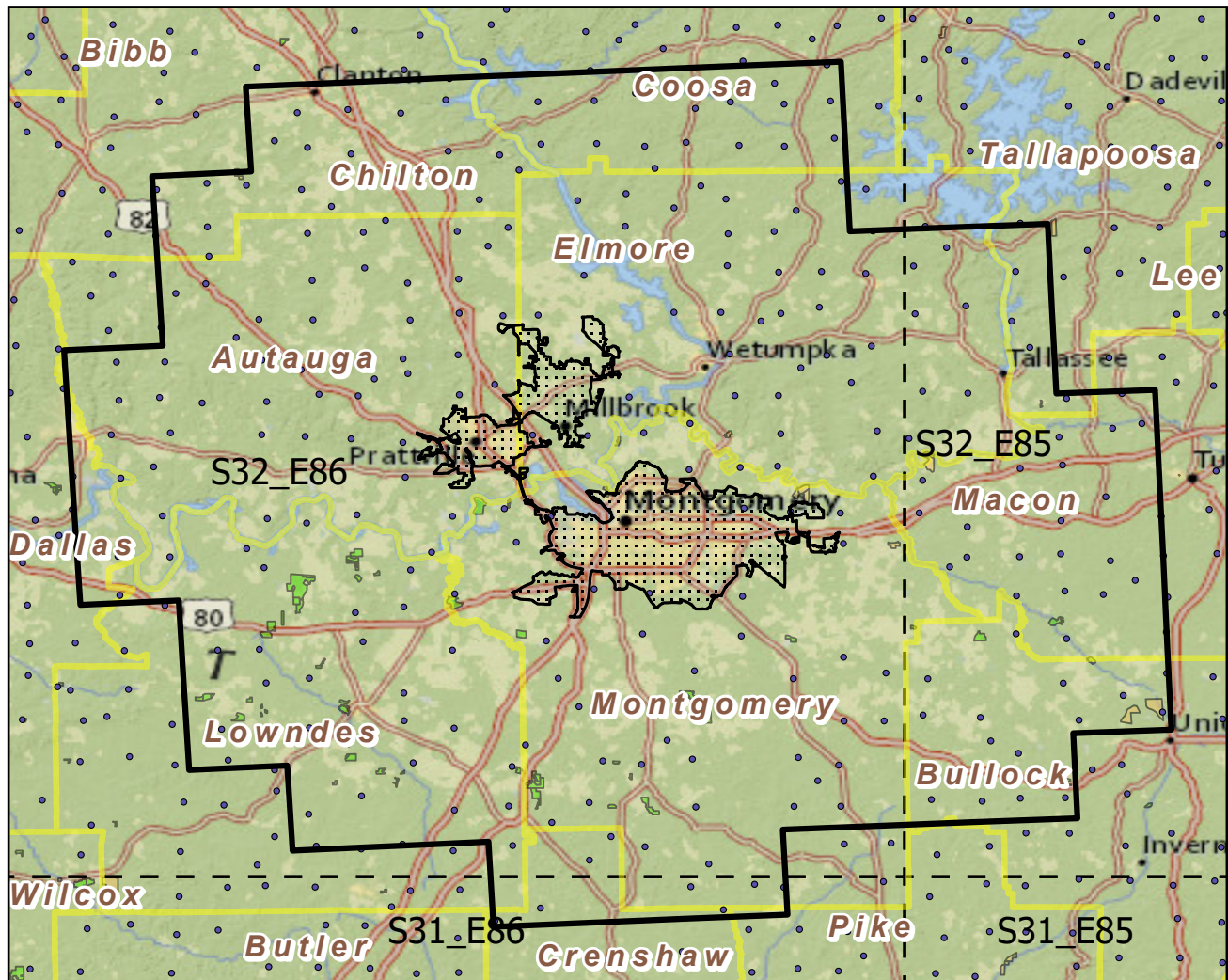


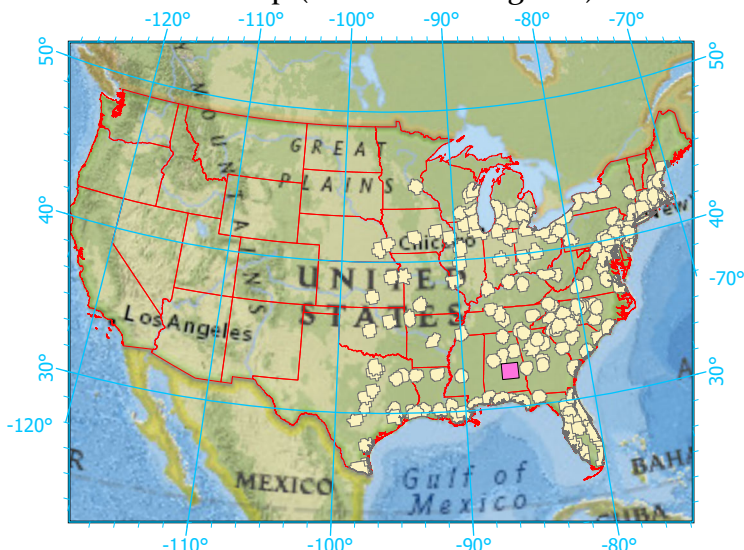
Urban Buffers with Protected Areas and Forest Inventory Plots



Center: 86°18'24"W 32°24'31"N
 States: Alabama

Scale: 1:846,000

Index map (selected in magenta)



Legend

	Urban Areas	Urban Area (sq km)=401
	Urban Buffers	Buffer Area (sq km)=9137
	State Boundary	Percent Urban=5%
	Forest Inventory Plots	Count=250 plots
	Counties	
	1x1 Degree Grid	
Protected Areas		
	Federal	
	Non-Governmental Organization	

Note: This map page is intended to accompany the forest summary tables, based on the inventory plots shown. Tables are located at <https://www.fs.fed.us/nrs/atlas/combined/resources/summaries/urban/>.