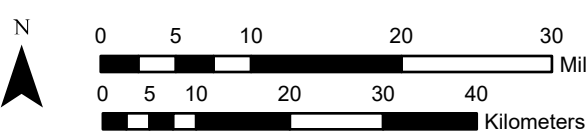
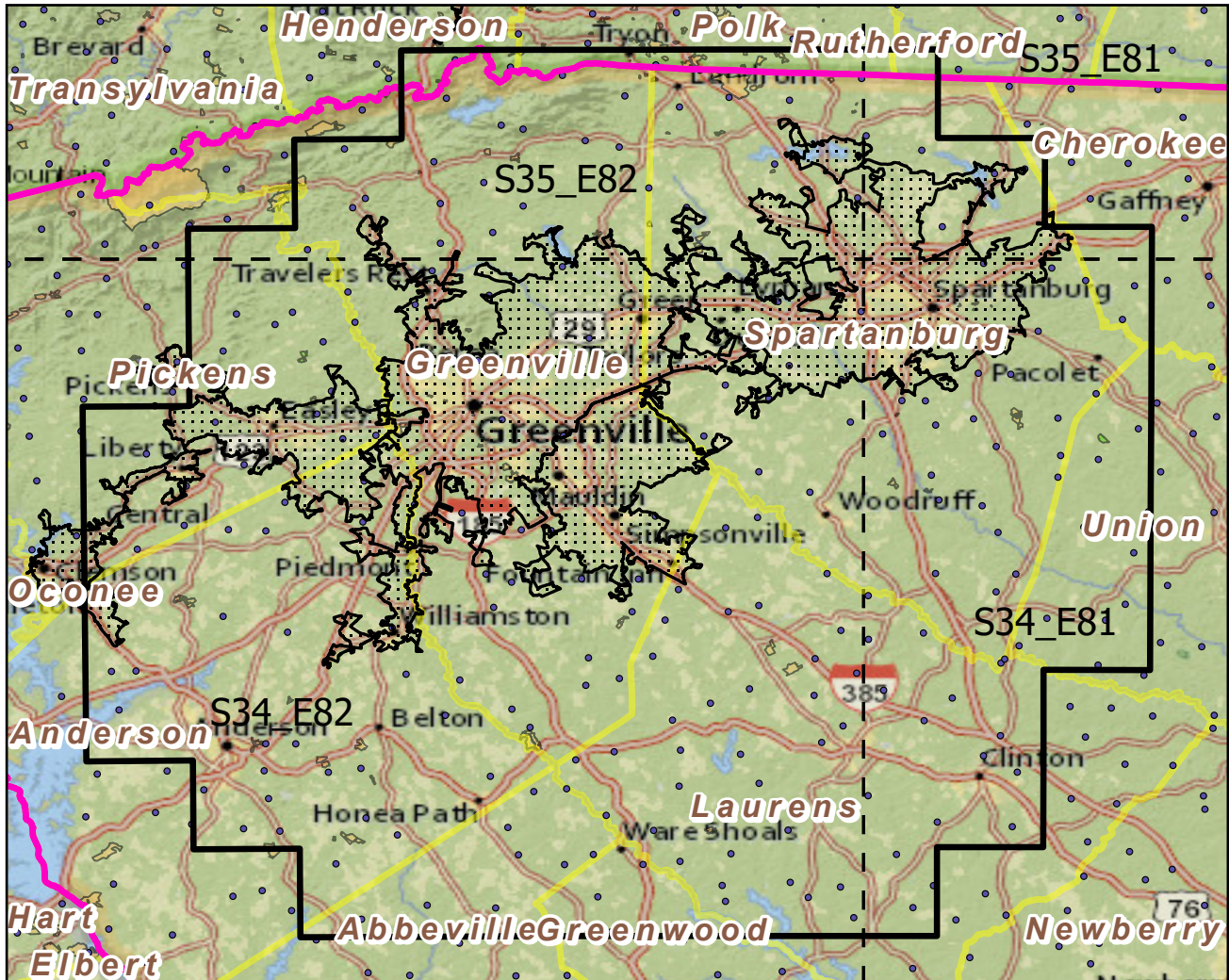


Mauldin--Simpsonville, SC

Landscape Change Research Group
 Iverson, Prasad, Peters, Matthews
 Northern Institute of Applied Climate Science
 USFS Northern Research Station
 Delaware, Ohio

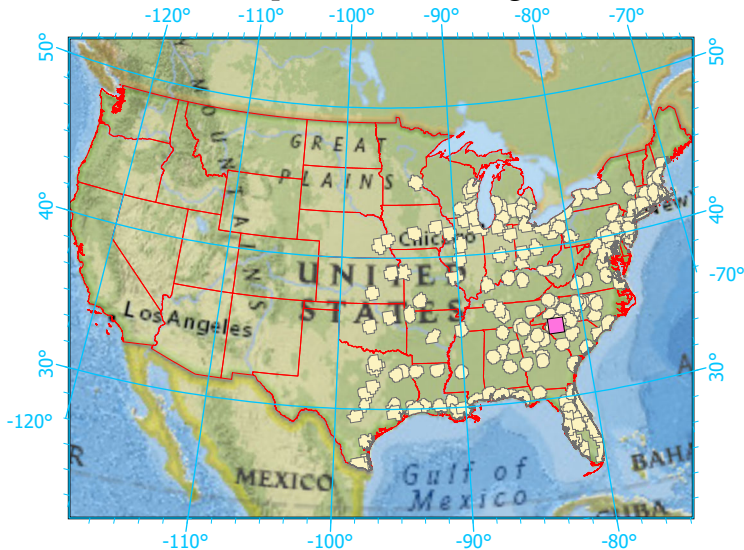
Urban Buffers with Protected Areas and Forest Inventory Plots



Center: 82°15'5"W 34°45'40"N
 States: South Carolina; North Carolina

Scale: 1:809,000

Index map (selected in magenta)



Legend

- Urban Areas Urban Area (sq km)=218
- Urban Buffers Buffer Area (sq km)=9137
- State Boundary Percent Urban=3%
- Forest Inventory Plots Count=219 plots
- Counties
- 1x1 Degree Grid
- Protected Areas**
- Federal
- Non-Governmental Organization
- Regional Agency Special District
- State
- Unknown

Note: This map page is intended to accompany the forest summary tables, based on the inventory plots shown. Tables are located at <https://www.fs.fed.us/nrs/atlas/combined/resources/summaries/urban/>.