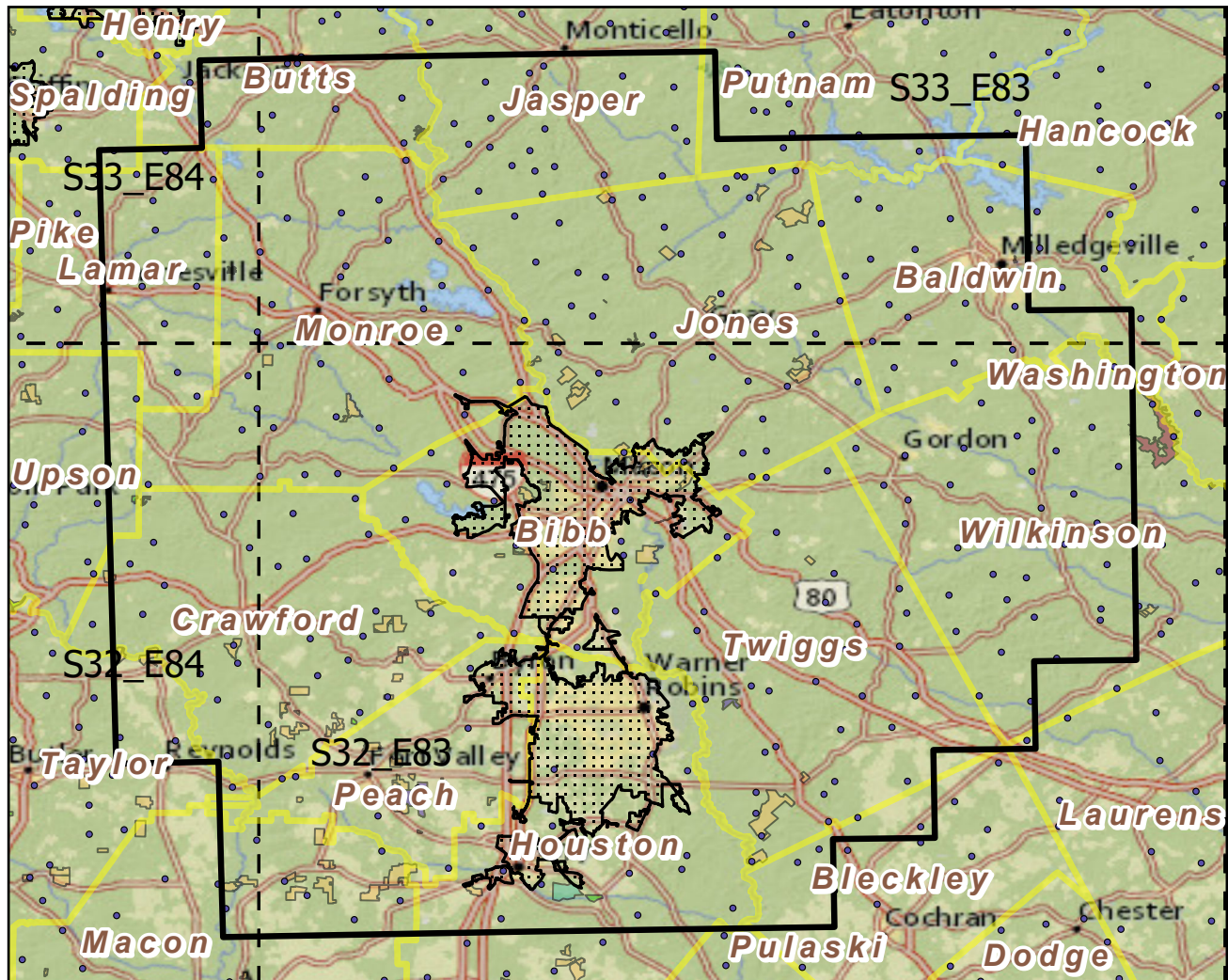


Urban Buffers with Protected Areas and Forest Inventory Plots

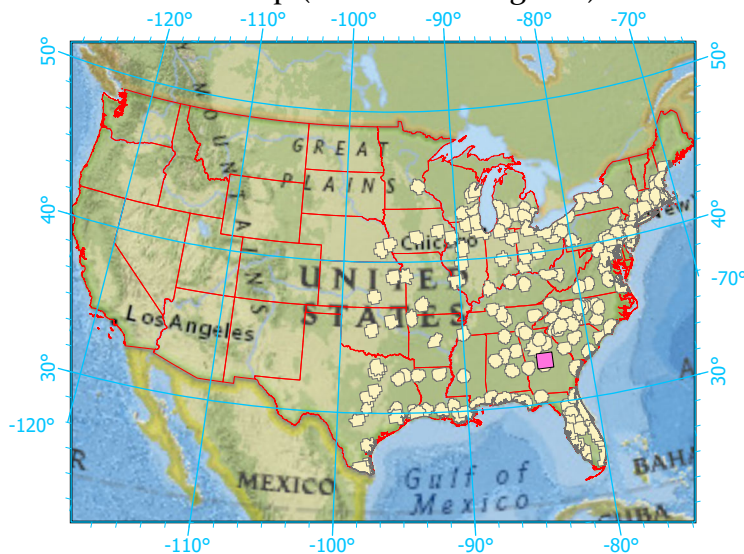


Center: 83°37'43"W 32°50'38"N
 States: Georgia



Scale: 1:819,000

Index map (selected in magenta)



Legend

- Urban Areas Urban Area (sq km)=256
- Urban Buffers Buffer Area (sq km)=9137
- State Boundary Percent Urban=3%
- Forest Inventory Plots Count=302 plots
- Counties
- 1x1 Degree Grid
- Protected Areas**
- Federal
- Local Government
- Non-Governmental Organization
- Regional Agency Special District
- State

Note: This map page is intended to accompany the forest summary tables, based on the inventory plots shown. Tables are located at <https://www.fs.fed.us/nrs/atlas/combined/resources/summaries/urban/>.