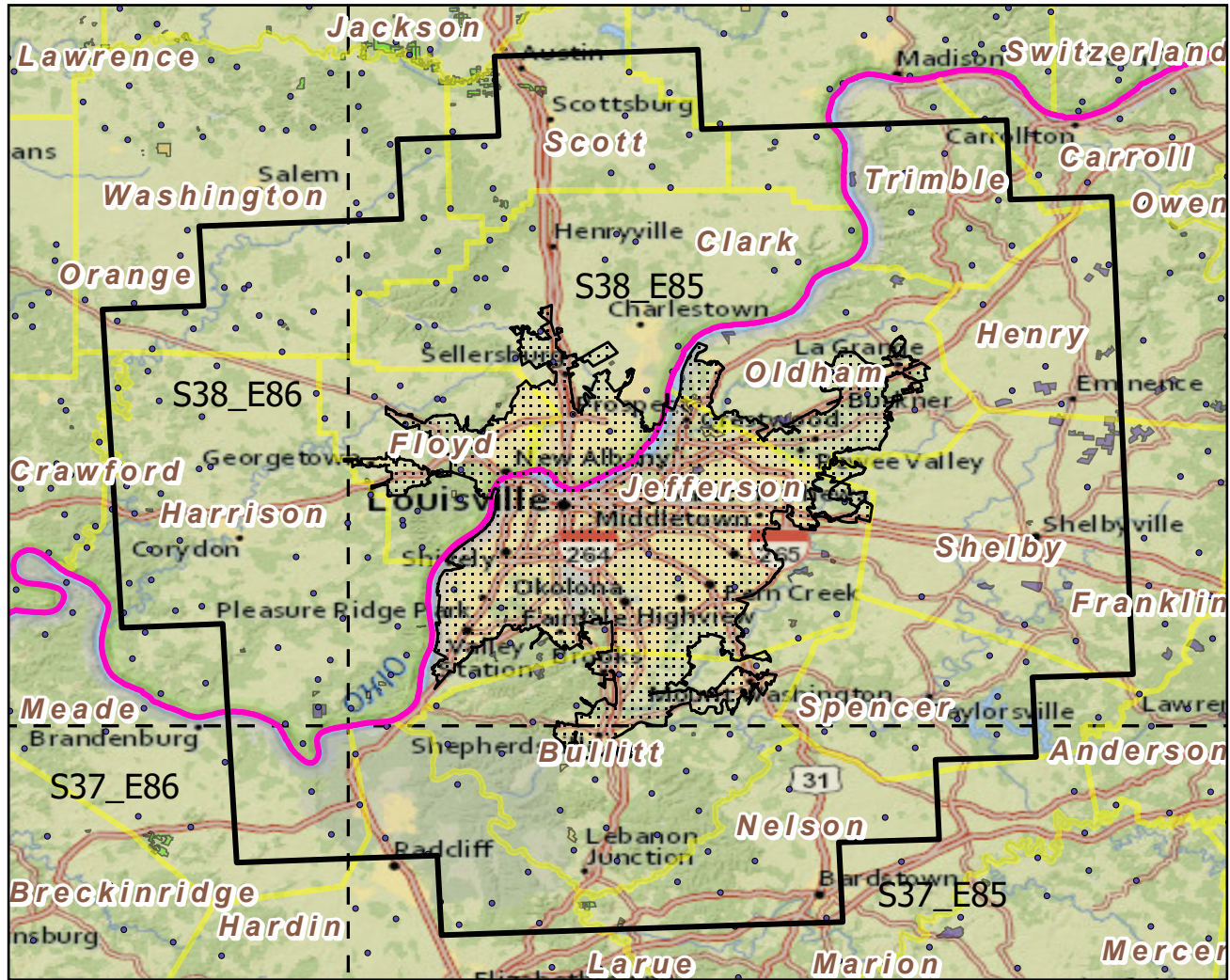


Louisville/Jefferson County, KY--IN

Landscape Change Research Group
 Iverson, Prasad, Peters, Matthews
 Northern Institute of Applied Climate Science
 USFS Northern Research Station
 Delaware, Ohio

Urban Buffers with Protected Areas and Forest Inventory Plots

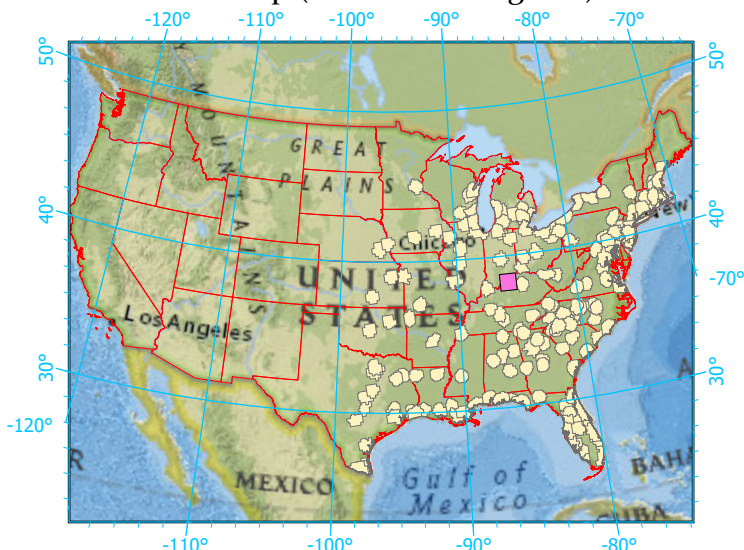


Center: 85°41'42"W 38°15'50"N
 States: Indiana; Kentucky



Scale: 1:895,000

Index map (selected in magenta)



- Legend**
- Urban Areas Urban Area (sq km)=1266
 - Urban Buffers Buffer Area (sq km)=9137
 - State Boundary Percent Urban=15%
 - Forest Inventory Plots Count=199 plots
 - Counties
 - 1x1 Degree Grid
 - Protected Areas**
 - Federal
 - Local Government
 - Non-Governmental Organization
 - State

Note: This map page is intended to accompany the forest summary tables, based on the inventory plots shown. Tables are located at <https://www.fs.fed.us/nrs/atlas/combined/resources/summaries/urban/>.