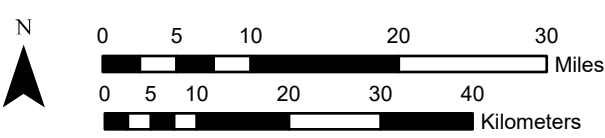
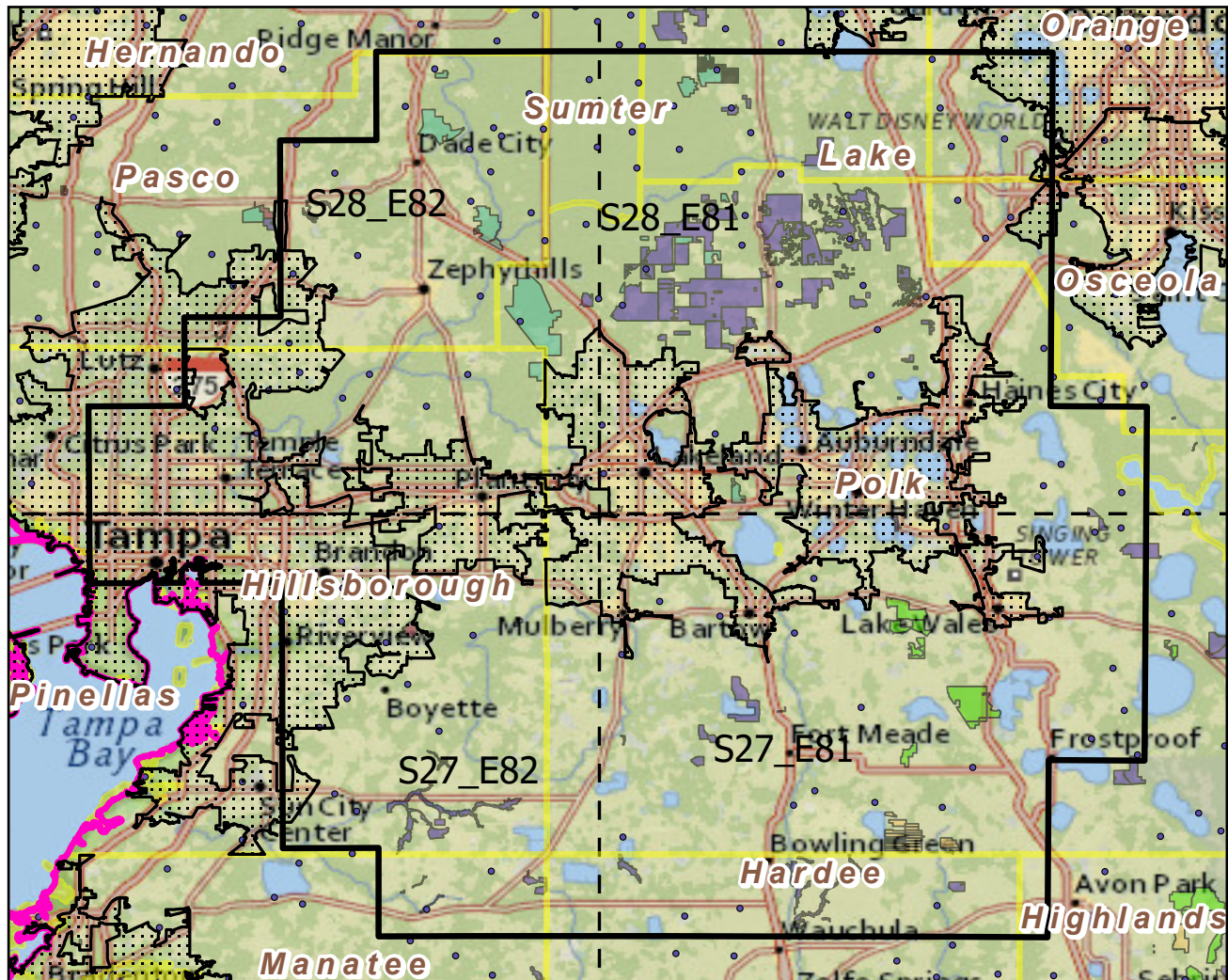


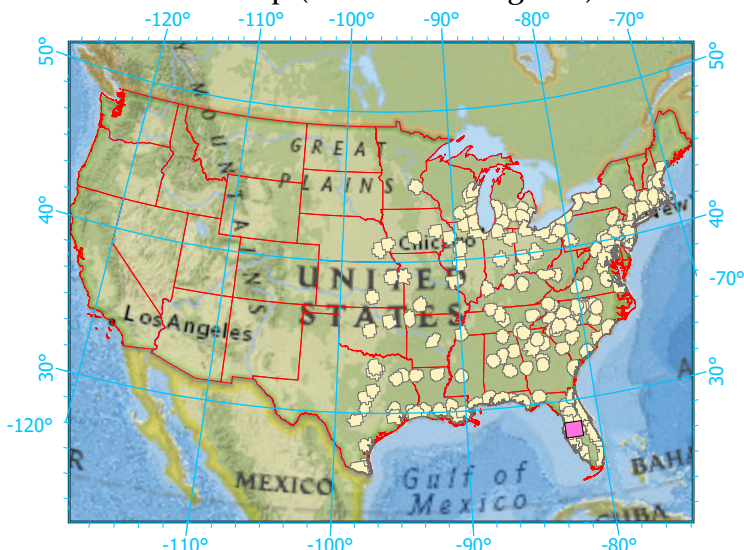
Urban Buffers with Protected Areas and Forest Inventory Plots



Center: 81°58'51"W 28°1'13"N
 States: Florida

Scale: 1:822,000

Index map (selected in magenta)



- Legend**
- Urban Areas Urban Area (sq km)=396
 - Urban Buffers Buffer Area (sq km)=9137
 - State Boundary Percent Urban=5%
 - Forest Inventory Plots Count=108 plots
 - Counties
 - 1x1 Degree Grid
- Protected Areas**
- Federal
 - Local Government
 - Non-Governmental Organization
 - Private
 - Regional Agency Special District
 - State
 - Unknown

Note: This map page is intended to accompany the forest summary tables, based on the inventory plots shown. Tables are located at <https://www.fs.fed.us/nrs/atlas/combined/resources/summaries/urban/>.