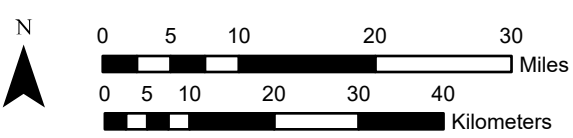
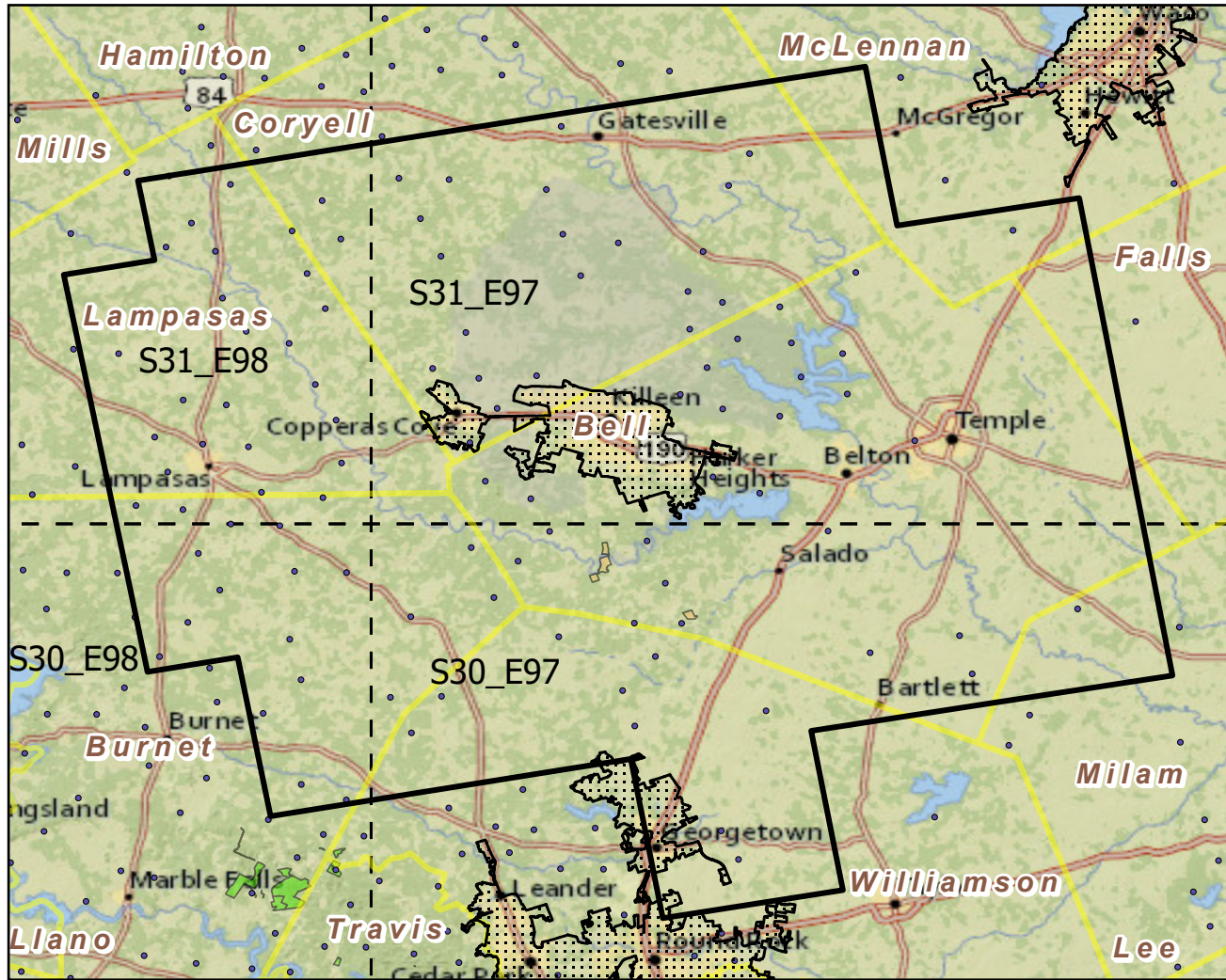


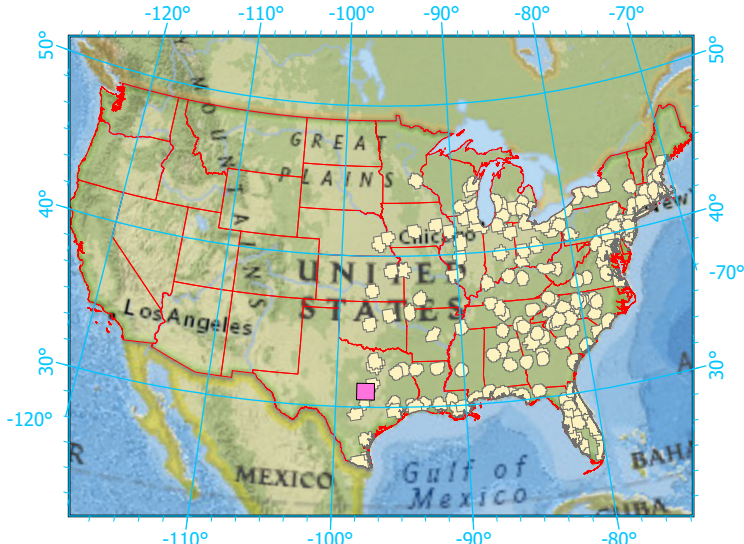
Urban Buffers with Protected Areas and Forest Inventory Plots



Center: 97°43'18"W 31°2'7"N  
 States: Texas

Scale: 1:893,000

Index map (selected in magenta)



- Legend
- Urban Areas      Urban Area (sq km)=220
  - Urban Buffers      Buffer Area (sq km)=9137
  - State Boundary      Percent Urban=3%
  - Forest Inventory Plots      Count=103 plots
  - Counties
  - 1x1 Degree Grid
  - Protected Areas**
  - Federal
  - Non-Governmental Organization

Note: This map page is intended to accompany the forest summary tables, based on the inventory plots shown. Tables are located at <https://www.fs.fed.us/nrs/atlas/combined/resources/summaries/urban/>.