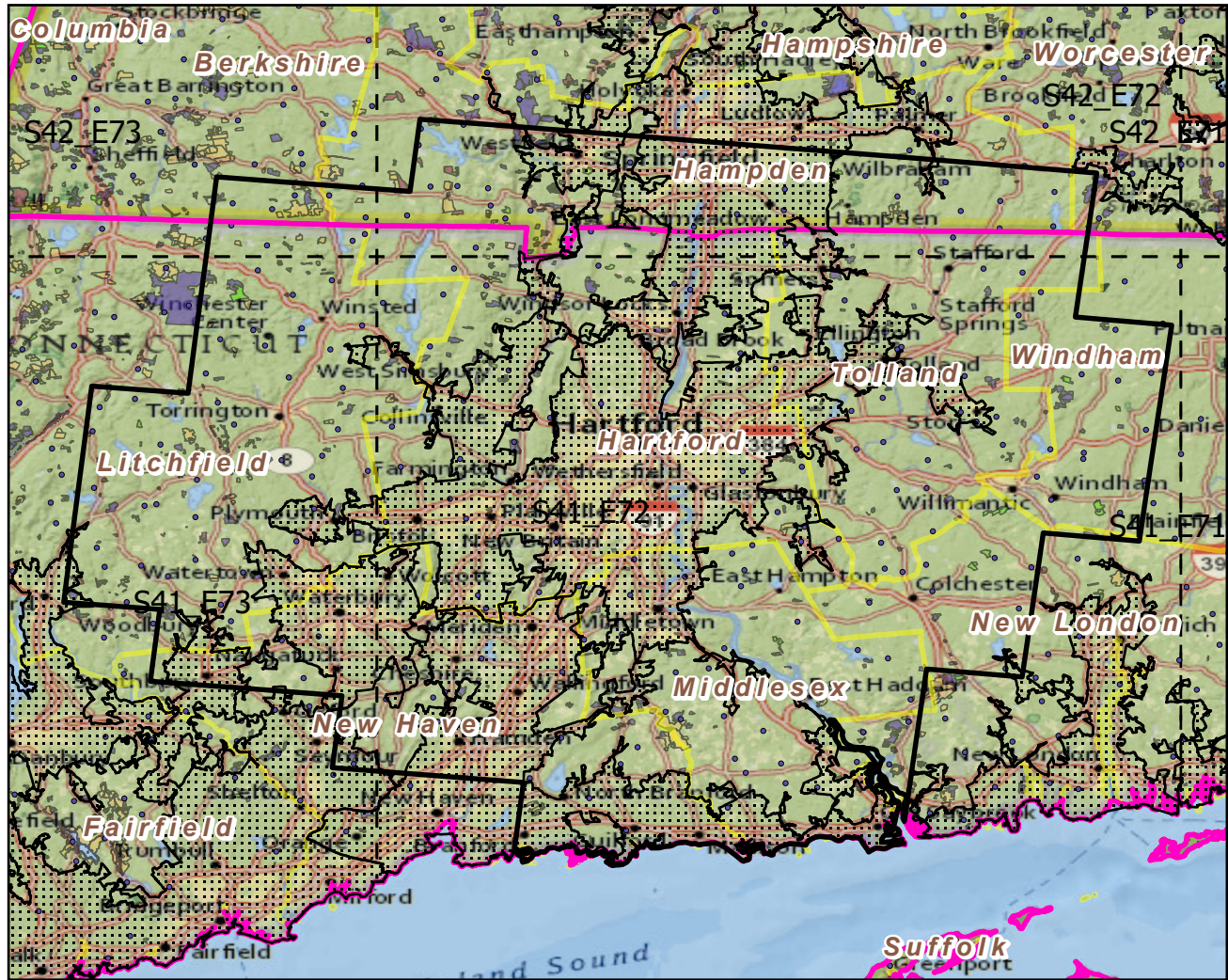
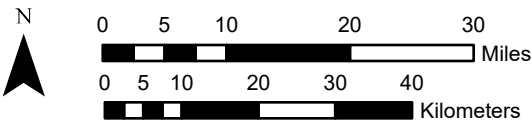


Urban Buffers with Protected Areas and Forest Inventory Plots

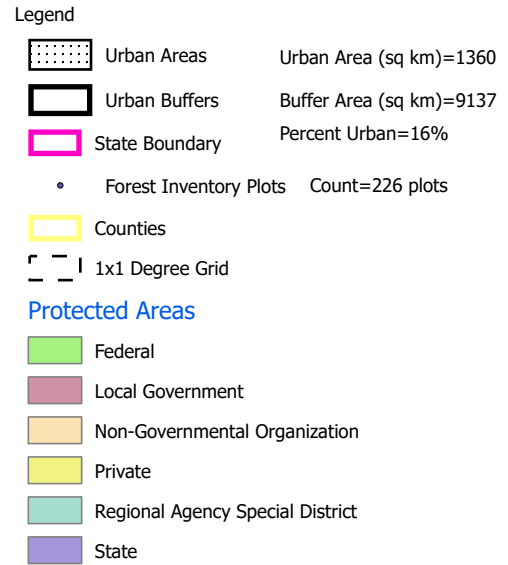
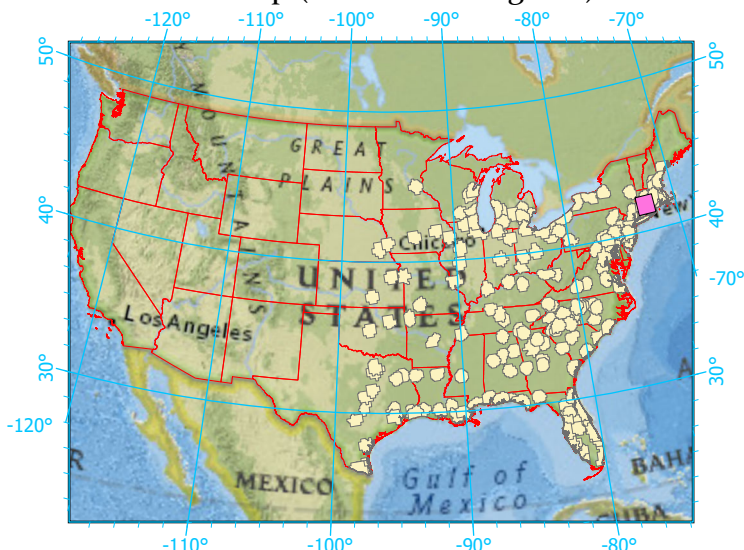


Center: 72°42'2"W 41°42'25"N
 States: Connecticut; Massachusetts



Scale: 1:984,000

Index map (selected in magenta)



Note: This map page is intended to accompany the forest summary tables, based on the inventory plots shown. Tables are located at <https://www.fs.fed.us/nrs/atlas/combined/resources/summaries/urban/>.