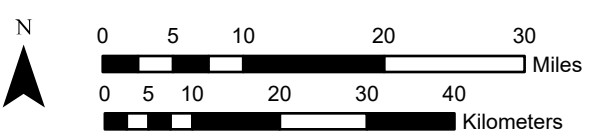
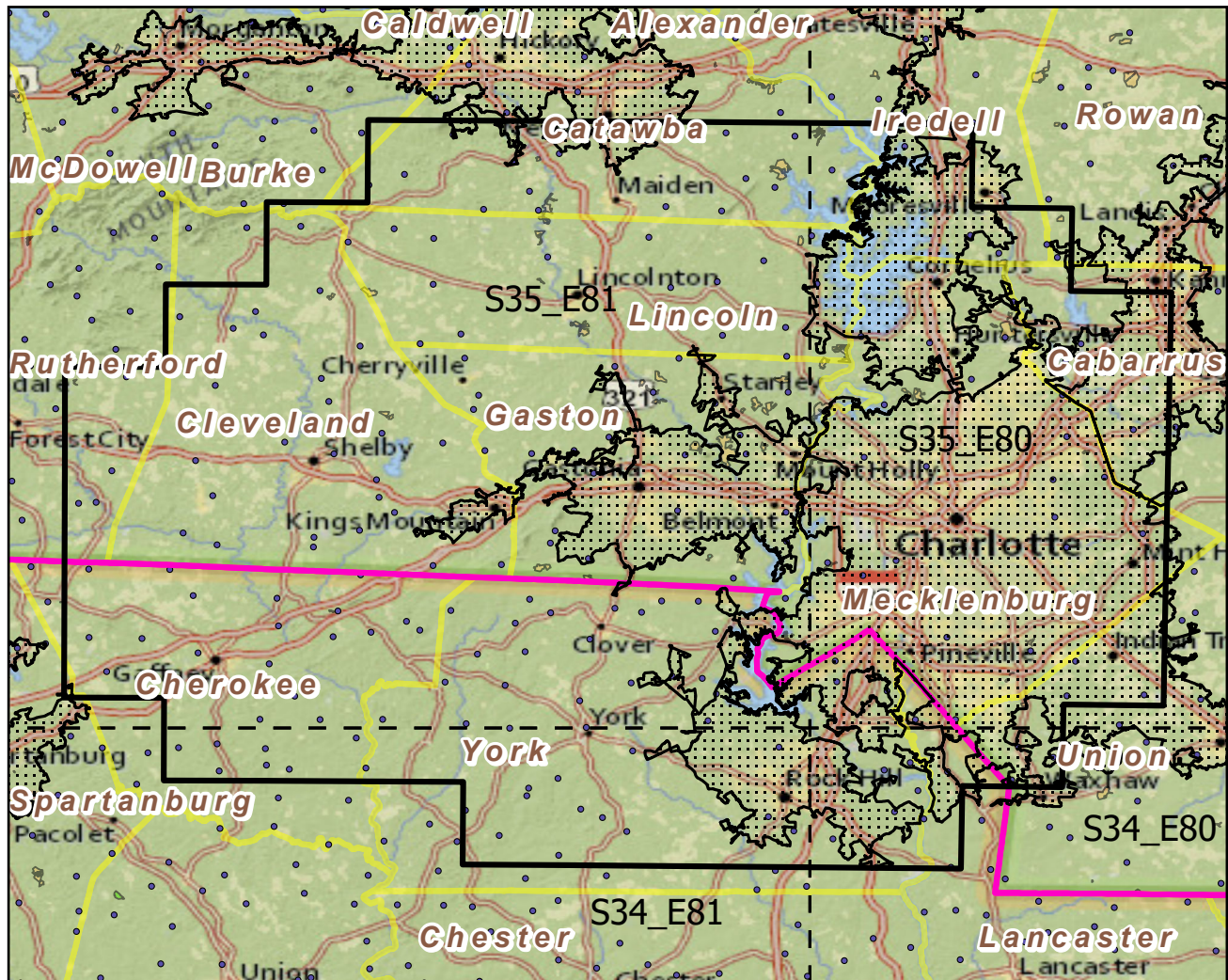


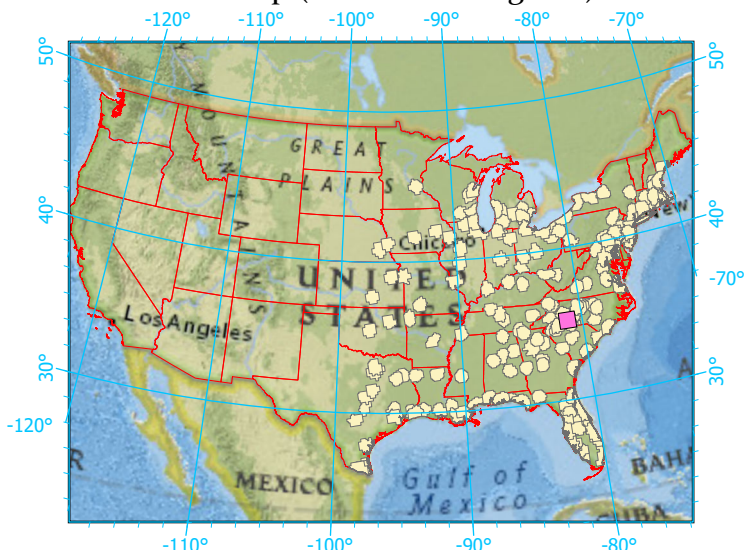
Urban Buffers with Protected Areas and Forest Inventory Plots



Center: 81°12'36"W 35°15'20"N
 States: South Carolina; North Carolina

Scale: 1:865,000

Index map (selected in magenta)



- Legend**
- Urban Areas Urban Area (sq km)=361
 - Urban Buffers Buffer Area (sq km)=9137
 - State Boundary Percent Urban=4%
 - Forest Inventory Plots Count=206 plots
 - Counties
 - 1x1 Degree Grid
- Protected Areas**
- Federal
 - Non-Governmental Organization
 - Regional Agency Special District
 - Unknown

Note: This map page is intended to accompany the forest summary tables, based on the inventory plots shown. Tables are located at <https://www.fs.fed.us/nrs/atlas/combined/resources/summaries/urban/>.