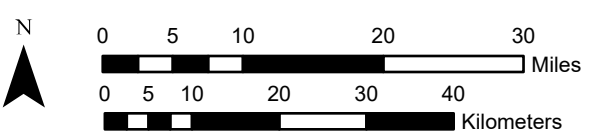
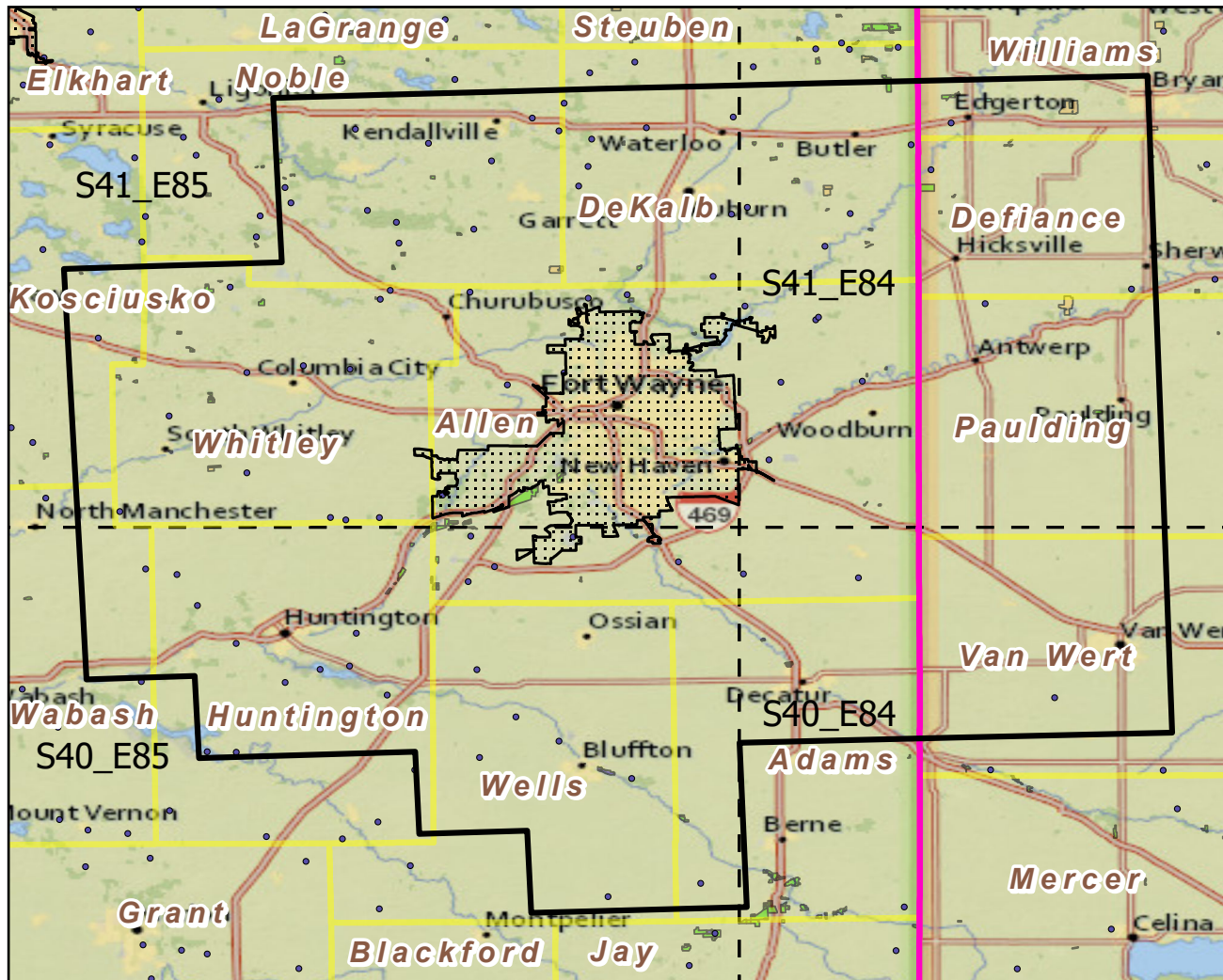


Fort Wayne, IN

Landscape Change Research Group
 Iverson, Prasad, Peters, Matthews
 Northern Institute of Applied Climate Science
 USFS Northern Research Station
 Delaware, Ohio

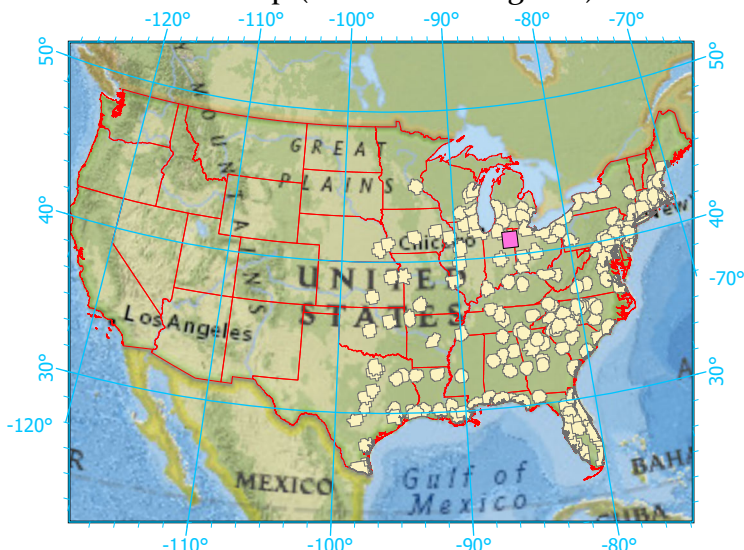
Urban Buffers with Protected Areas and Forest Inventory Plots



Center: 85°7'58"W 41°2'10"N
 States: Indiana; Ohio

Scale: 1:867,000

Index map (selected in magenta)



Legend

	Urban Areas	Urban Area (sq km)=447
	Urban Buffers	Buffer Area (sq km)=9137
	State Boundary	Percent Urban=6%
	Forest Inventory Plots	Count=80 plots
	Counties	
	1x1 Degree Grid	
Protected Areas		
	Federal	
	Non-Governmental Organization	
	Regional Agency Special District	
	State	

Note: This map page is intended to accompany the forest summary tables, based on the inventory plots shown. Tables are located at <https://www.fs.fed.us/nrs/atlas/combined/resources/summaries/urban/>.