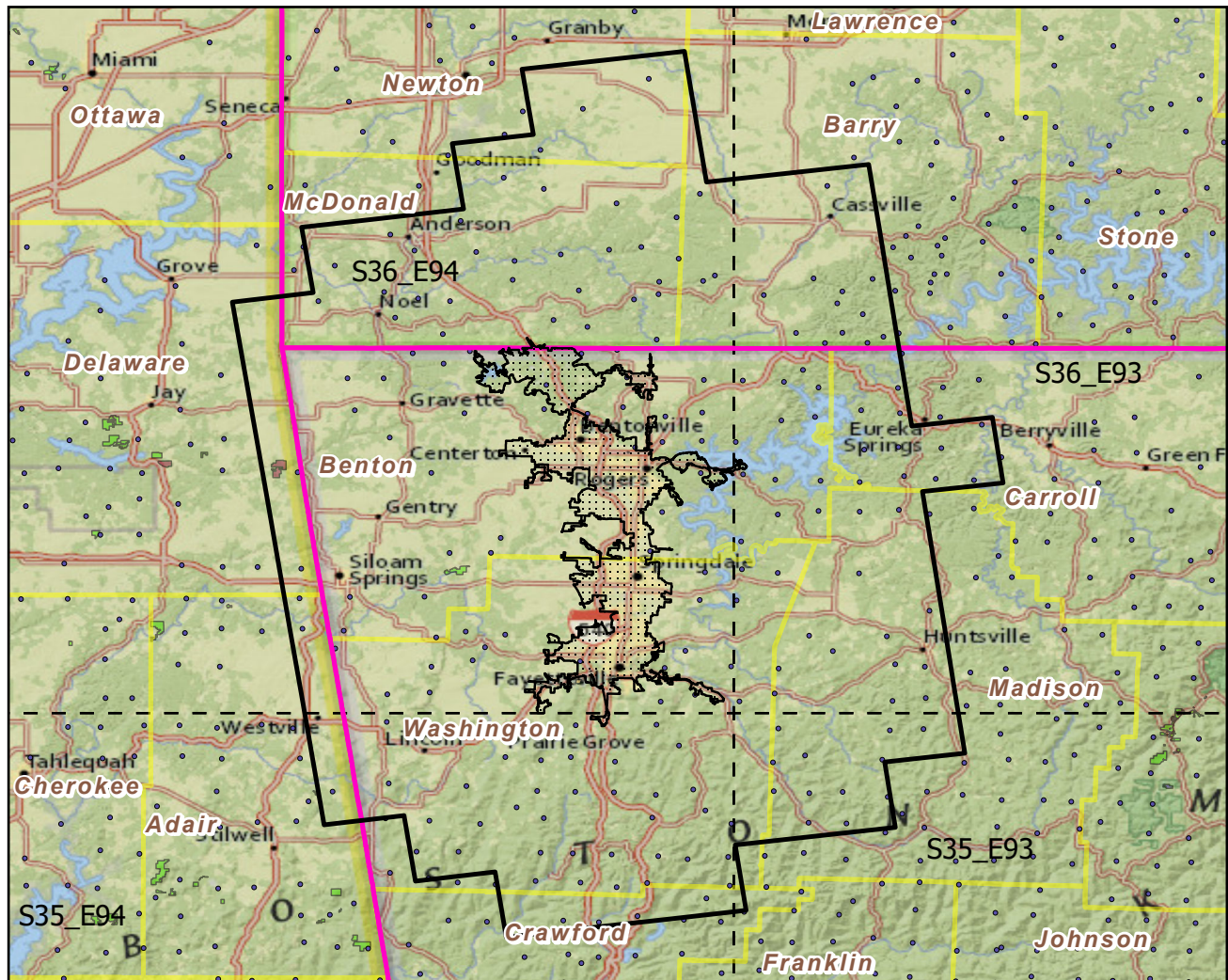


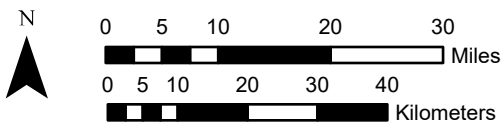
# Fayetteville--Springdale--Rogers, AR--MO

Landscape Change Research Group  
 Iverson, Prasad, Peters, Matthews  
 Northern Institute of Applied Climate Science  
 USFS Northern Research Station  
 Delaware, Ohio

## Urban Buffers with Protected Areas and Forest Inventory Plots

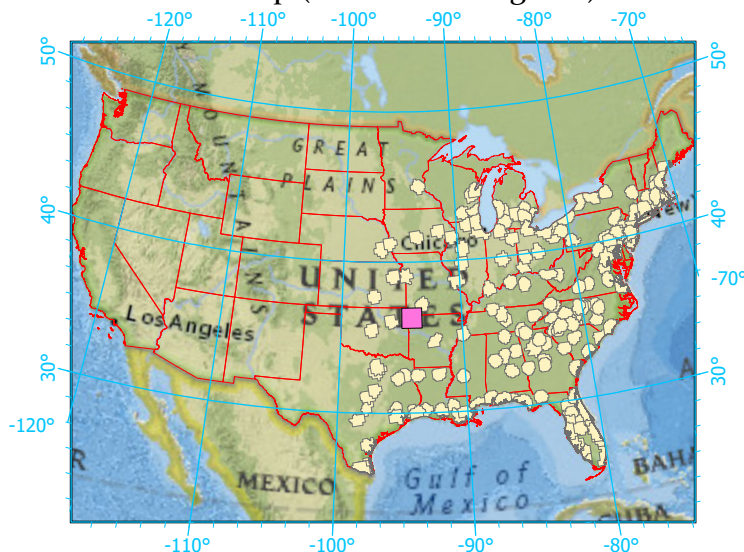


Center: 94°9'31"W 36°17'57"N  
 States: Oklahoma; Arkansas; Missouri



Scale: 1:1,082,000

Index map (selected in magenta)



Note: This map page is intended to accompany the forest summary tables, based on the inventory plots shown. Tables are located at <https://www.fs.fed.us/nrs/atlas/combined/resources/summaries/urban/>.