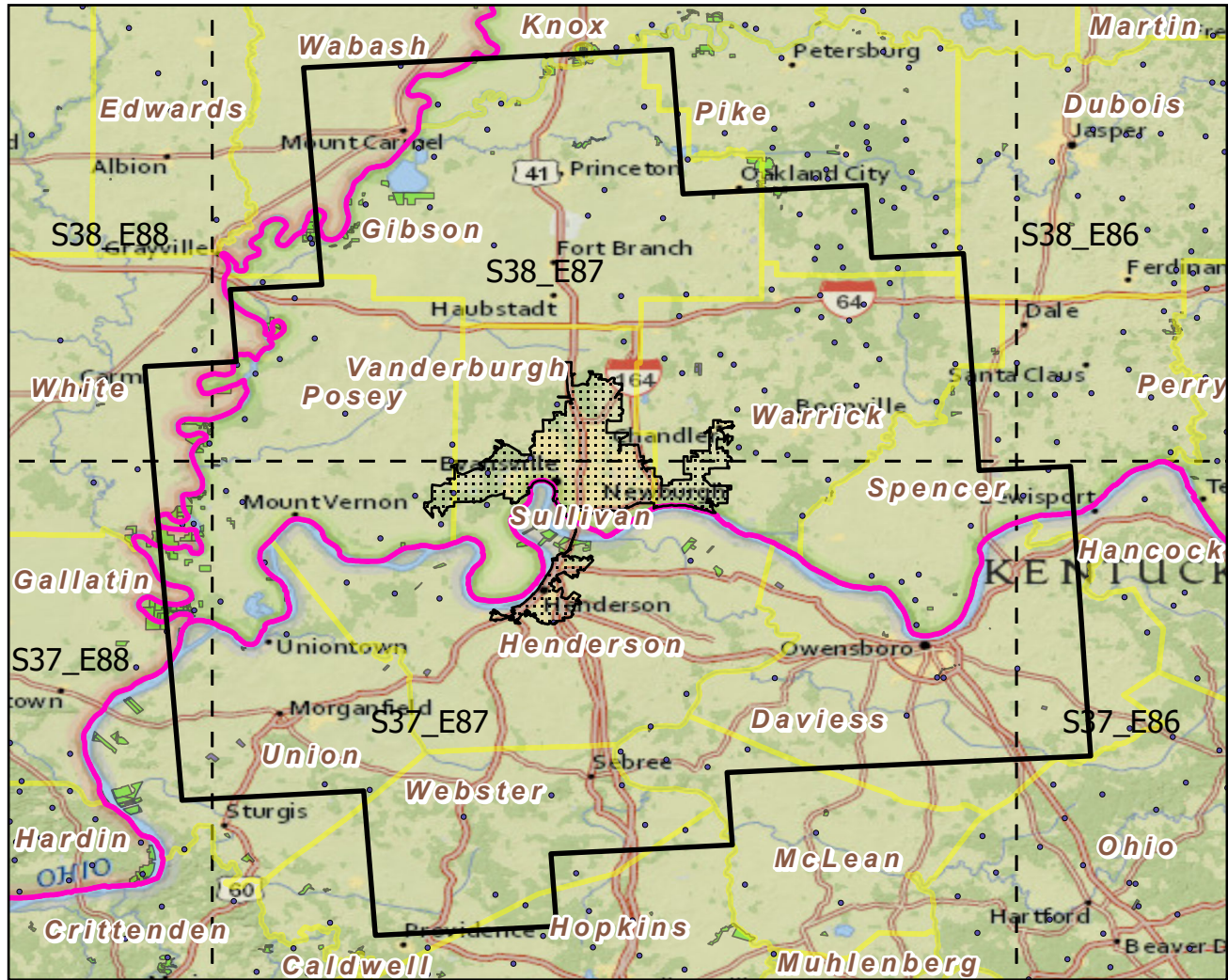
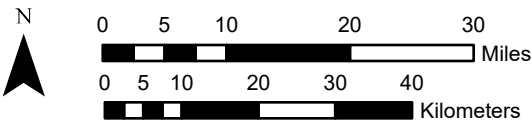


Urban Buffers with Protected Areas and Forest Inventory Plots

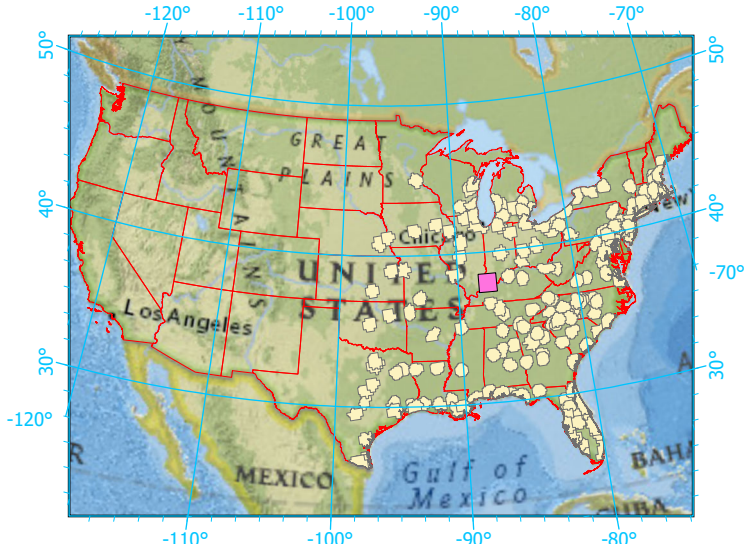


Center: 87°29'45"W 37°57'39"N  
 States: Indiana; Kentucky; Illinois



Scale: 1:984,000

Index map (selected in magenta)



**Legend**

	Urban Areas	Urban Area (sq km)=311
	Urban Buffers	Buffer Area (sq km)=9137
	State Boundary	Percent Urban=4%
	Forest Inventory Plots	Count=111 plots
	Counties	
	1x1 Degree Grid	
<b>Protected Areas</b>		
	Federal	
	State	

Note: This map page is intended to accompany the forest summary tables, based on the inventory plots shown. Tables are located at <https://www.fs.fed.us/nrs/atlas/combined/resources/summaries/urban/>.