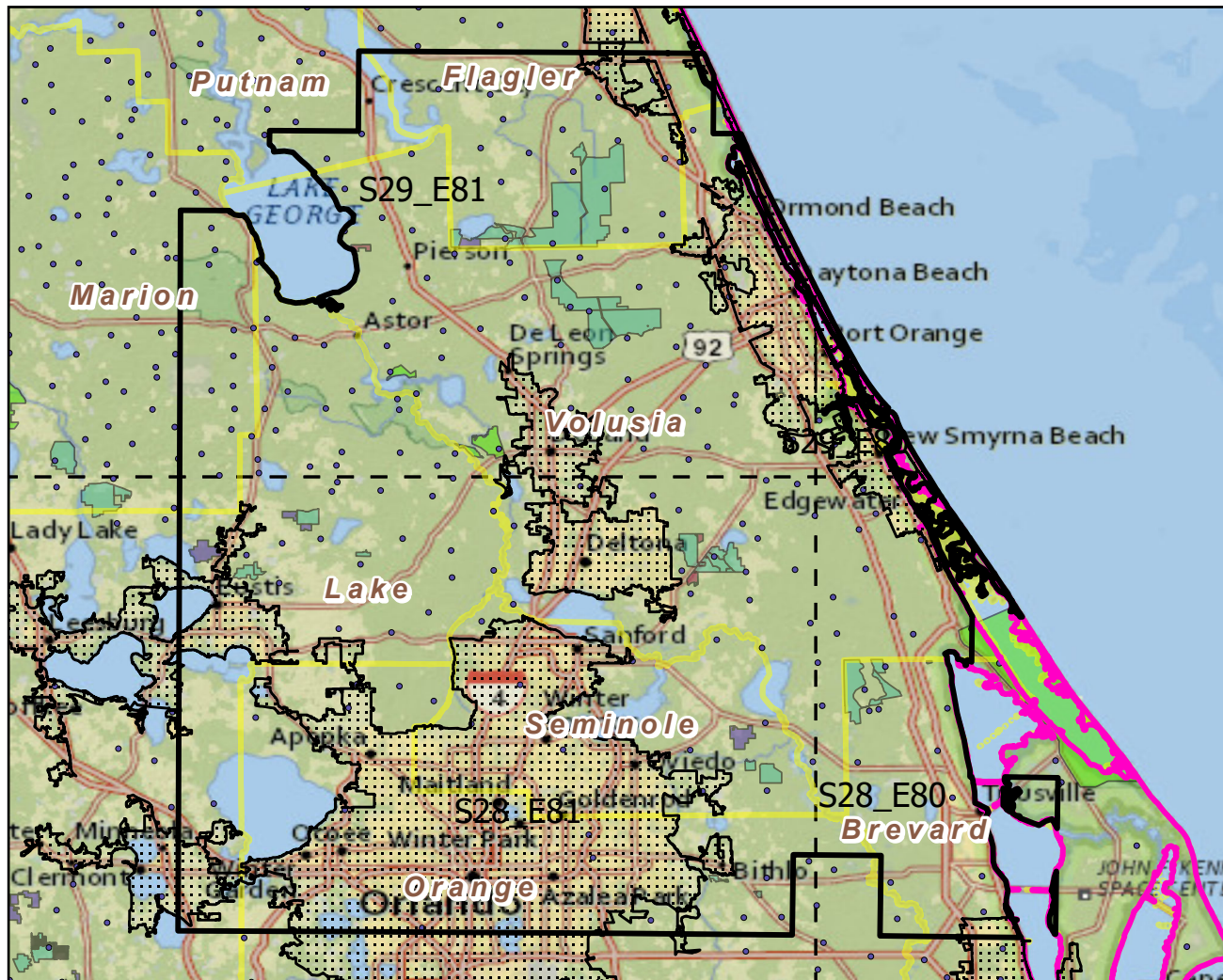
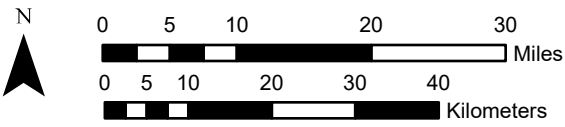


Urban Buffers with Protected Areas and Forest Inventory Plots

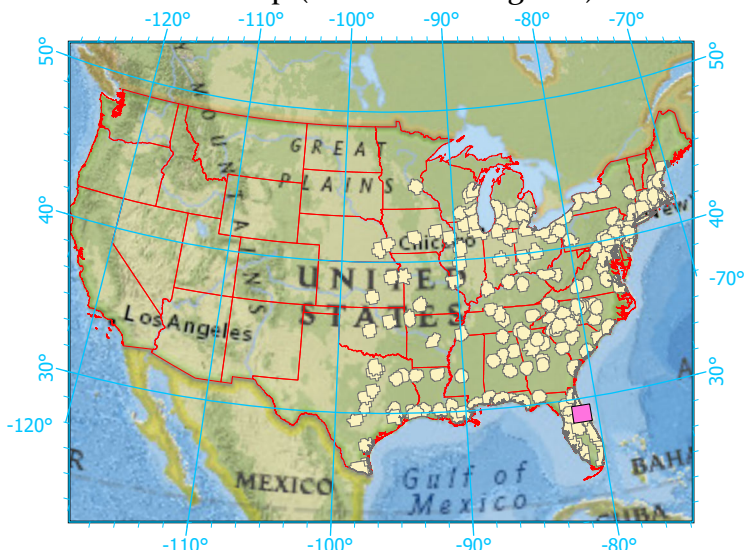


Center: 81°13'35"W 28°58'48"N
 States: Florida



Scale: 1:906,000

Index map (selected in magenta)



Legend

	Urban Areas	Urban Area (sq km)=259
	Urban Buffers	Buffer Area (sq km)=9137
	State Boundary	Percent Urban=3%
	Forest Inventory Plots	Count=195 plots
	Counties	
	1x1 Degree Grid	
Protected Areas		
	Federal	
	Local Government	
	Non-Governmental Organization	
	Regional Agency Special District	
	State	

Note: This map page is intended to accompany the forest summary tables, based on the inventory plots shown. Tables are located at <https://www.fs.fed.us/nrs/atlas/combined/resources/summaries/urban/>.