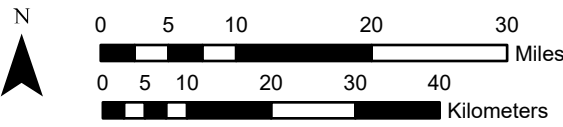
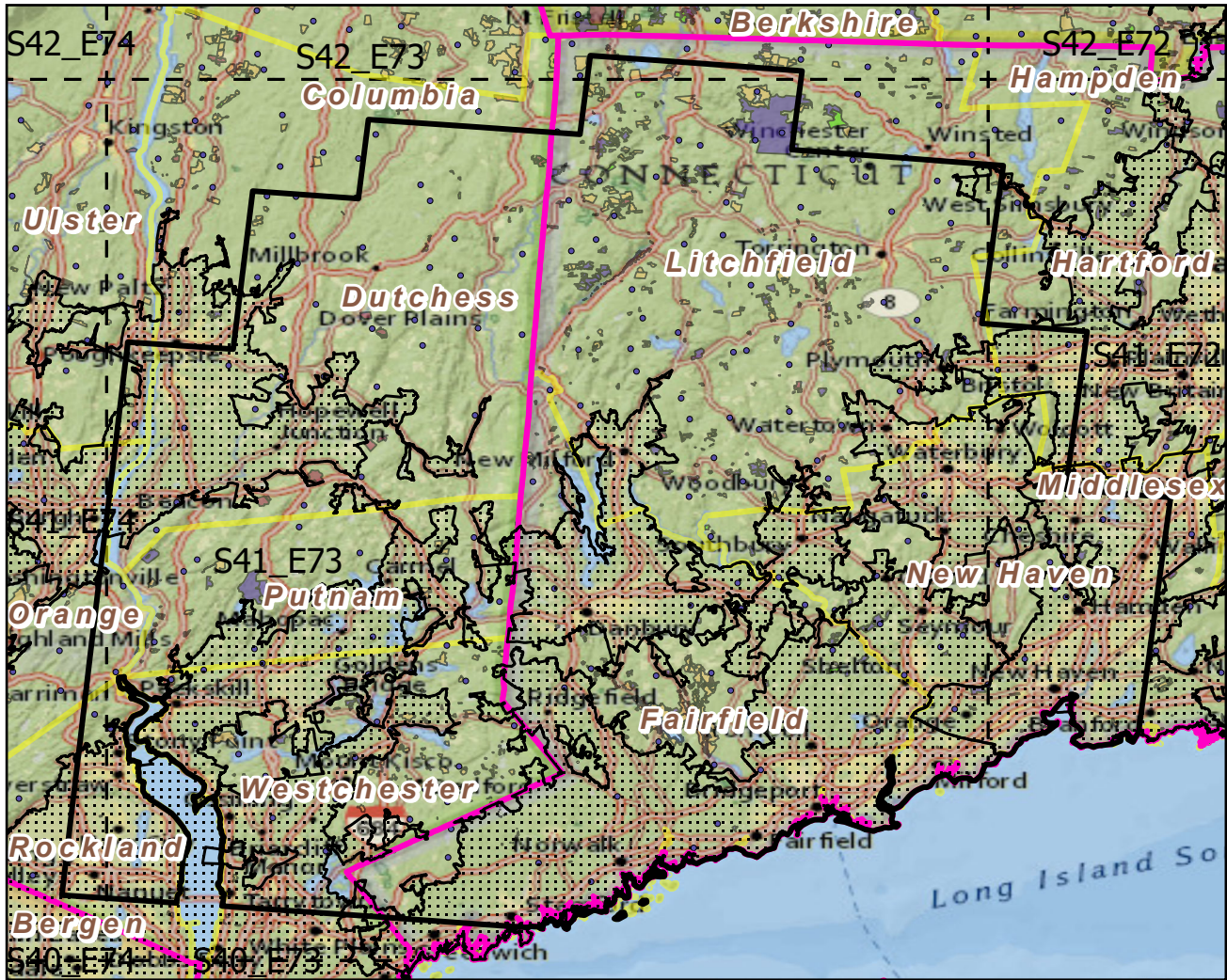


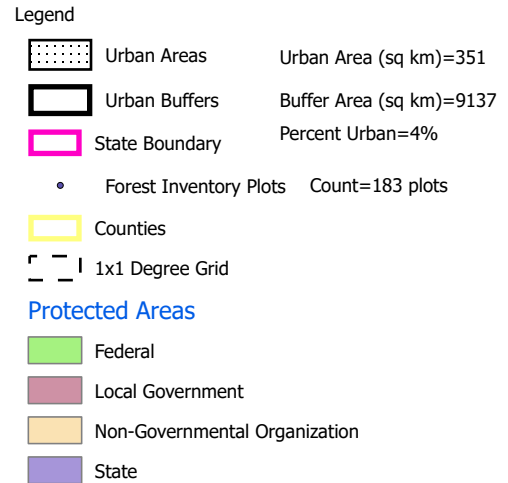
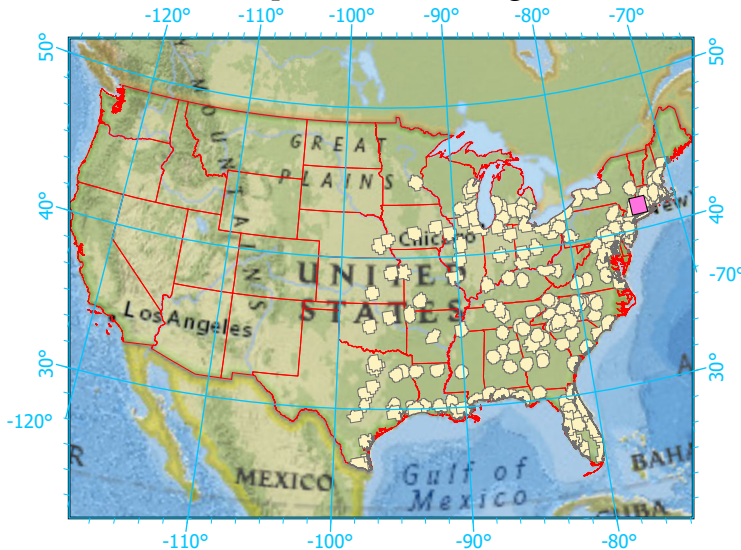
Urban Buffers with Protected Areas and Forest Inventory Plots



Center: 73°25'19"W 41°31'53"N
 States: New York; Connecticut

Scale: 1:898,000

Index map (selected in magenta)



Note: This map page is intended to accompany the forest summary tables, based on the inventory plots shown. Tables are located at <https://www.fs.fed.us/nrs/atlas/combined/resources/summaries/urban/>.