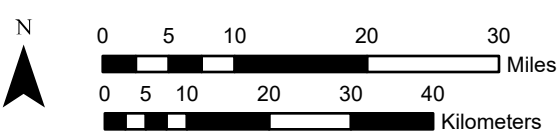
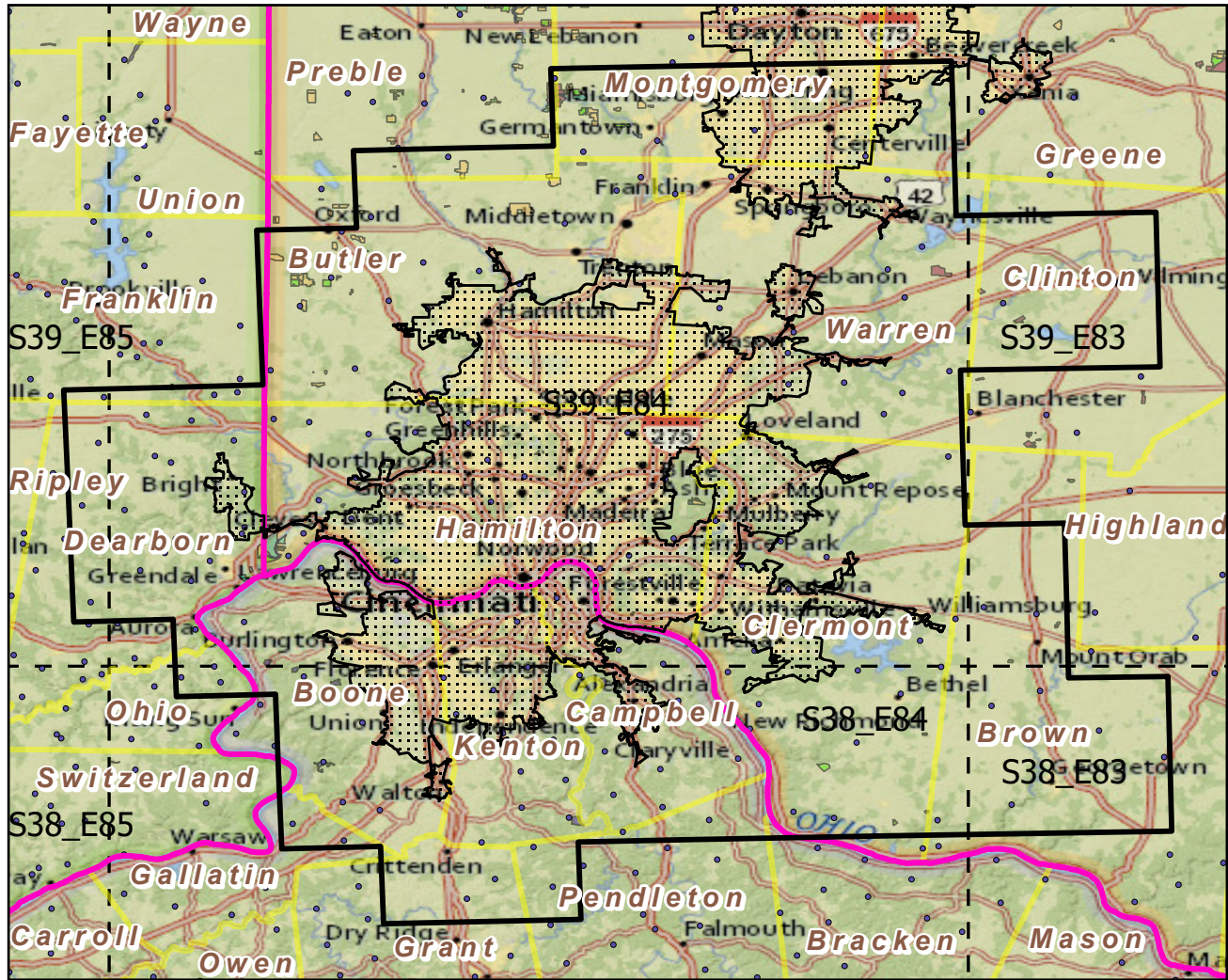


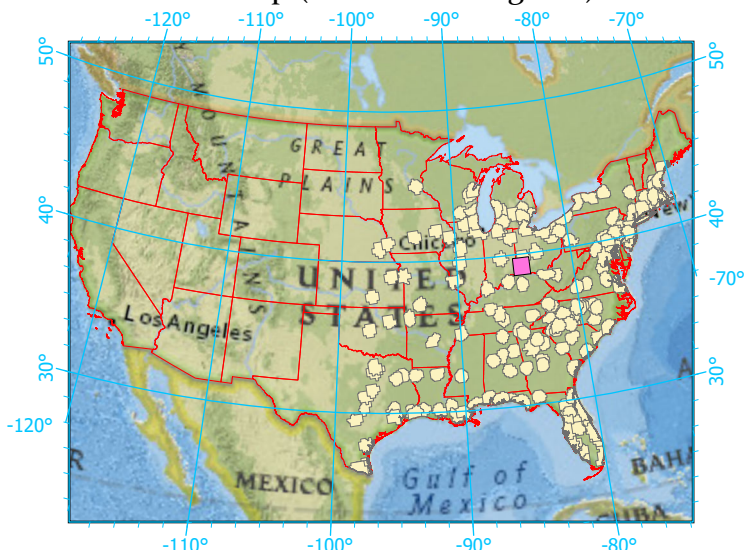
Urban Buffers with Protected Areas and Forest Inventory Plots



Center: 84°24'29"W 39°12'8"N
 States: Indiana; Ohio; Kentucky

Scale: 1:921,000

Index map (selected in magenta)



Legend

| | | |
|------------------------|----------------------------------|--------------------------|
| | Urban Areas | Urban Area (sq km)=2065 |
| | Urban Buffers | Buffer Area (sq km)=9137 |
| | State Boundary | Percent Urban=24% |
| | Forest Inventory Plots | Count=158 plots |
| | Counties | |
| | 1x1 Degree Grid | |
| Protected Areas | | |
| | Federal | |
| | Local Government | |
| | Non-Governmental Organization | |
| | Regional Agency Special District | |
| | State | |

Note: This map page is intended to accompany the forest summary tables, based on the inventory plots shown. Tables are located at <https://www.fs.fed.us/nrs/atlas/combined/resources/summaries/urban/>.