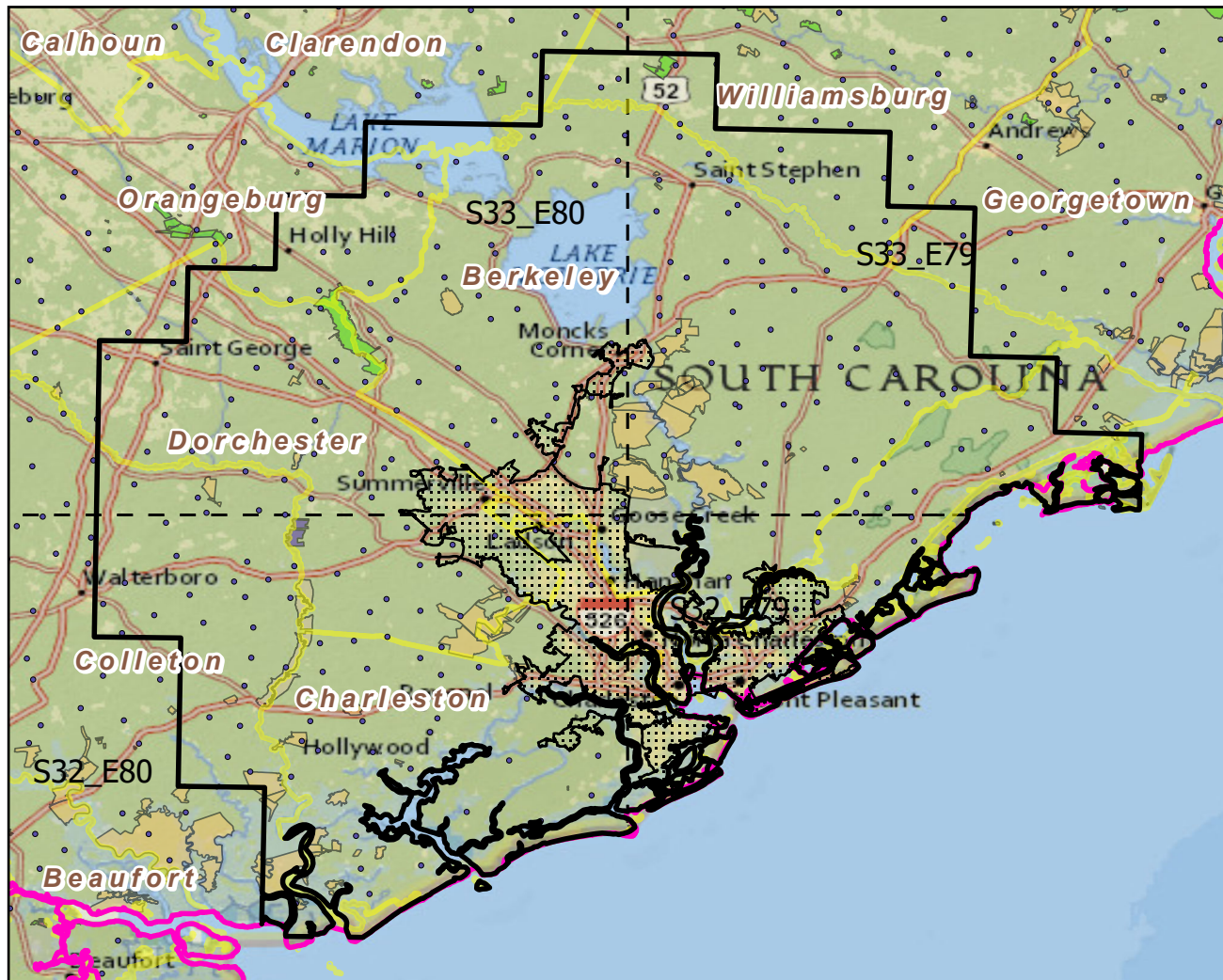


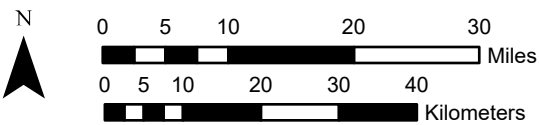
Charleston--North Charleston, SC

Landscape Change Research Group
 Iverson, Prasad, Peters, Matthews
 Northern Institute of Applied Climate Science
 USFS Northern Research Station
 Delaware, Ohio

Urban Buffers with Protected Areas and Forest Inventory Plots

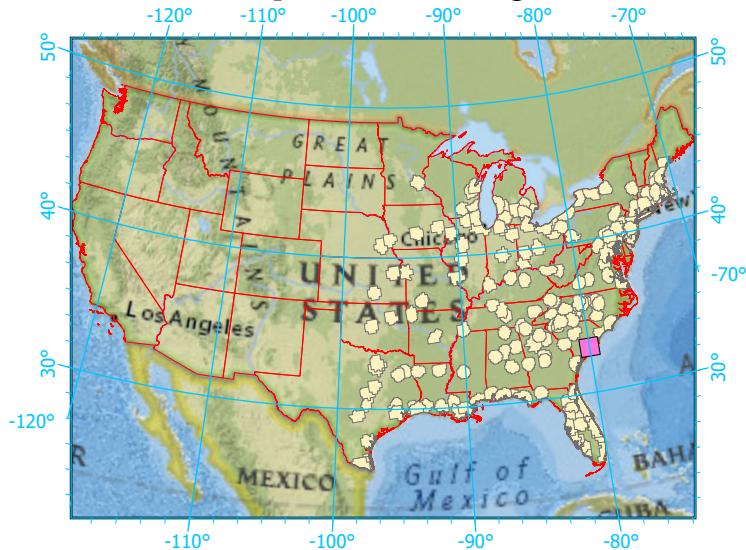


Center: 80°0'43"W 33°1'32"N
 States: South Carolina



Scale: 1:969,000

Index map (selected in magenta)



Legend

- Urban Areas Urban Area (sq km)=789
 - Urban Buffers Buffer Area (sq km)=9137
 - State Boundary Percent Urban=9%
 - Forest Inventory Plots Count=254 plots
 - Counties
 - 1x1 Degree Grid
- ### Protected Areas
- Federal
 - Local Government
 - Non-Governmental Organization
 - Regional Agency Special District
 - State
 - Unknown

Note: This map page is intended to accompany the forest summary tables, based on the inventory plots shown. Tables are located at <https://www.fs.fed.us/nrs/atlas/combined/resources/summaries/urban/>.