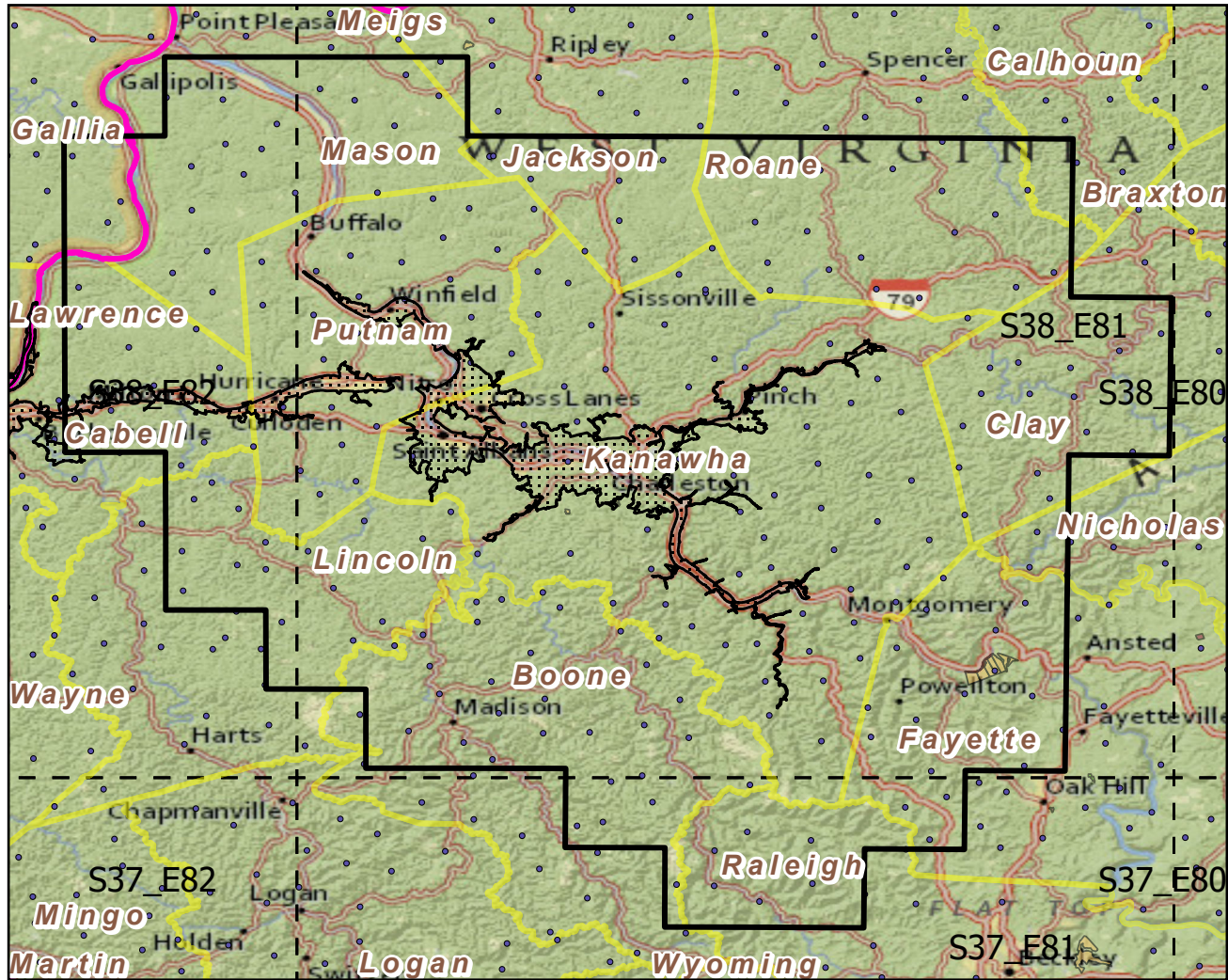
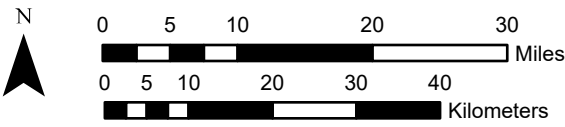


Urban Buffers with Protected Areas and Forest Inventory Plots

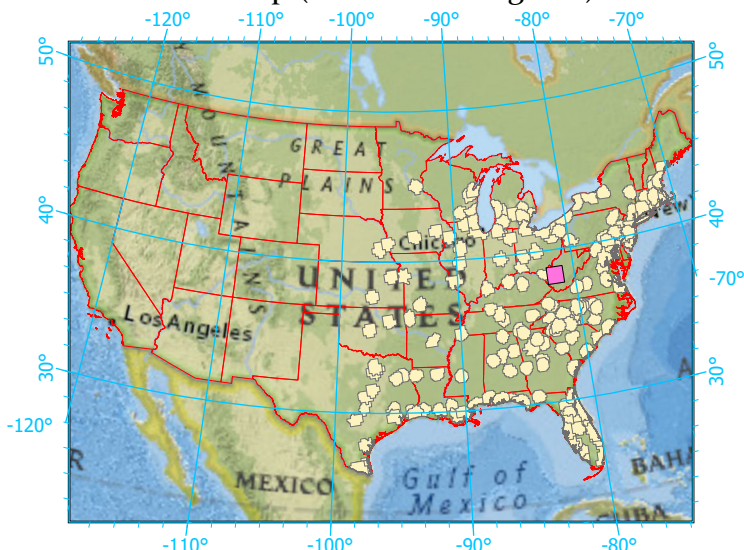


Center: 81°38'3"W 38°19'31"N
 States: Ohio; West Virginia



Scale: 1:902,000

Index map (selected in magenta)



- Legend
- Urban Areas Urban Area (sq km)=273
 - Urban Buffers Buffer Area (sq km)=9137
 - State Boundary Percent Urban=3%
 - Forest Inventory Plots Count=234 plots
 - Counties
 - 1x1 Degree Grid
 - Protected Areas**
 - Federal
 - Local Government
 - Non-Governmental Organization

Note: This map page is intended to accompany the forest summary tables, based on the inventory plots shown. Tables are located at <https://www.fs.fed.us/nrs/atlas/combined/resources/summaries/urban/>.