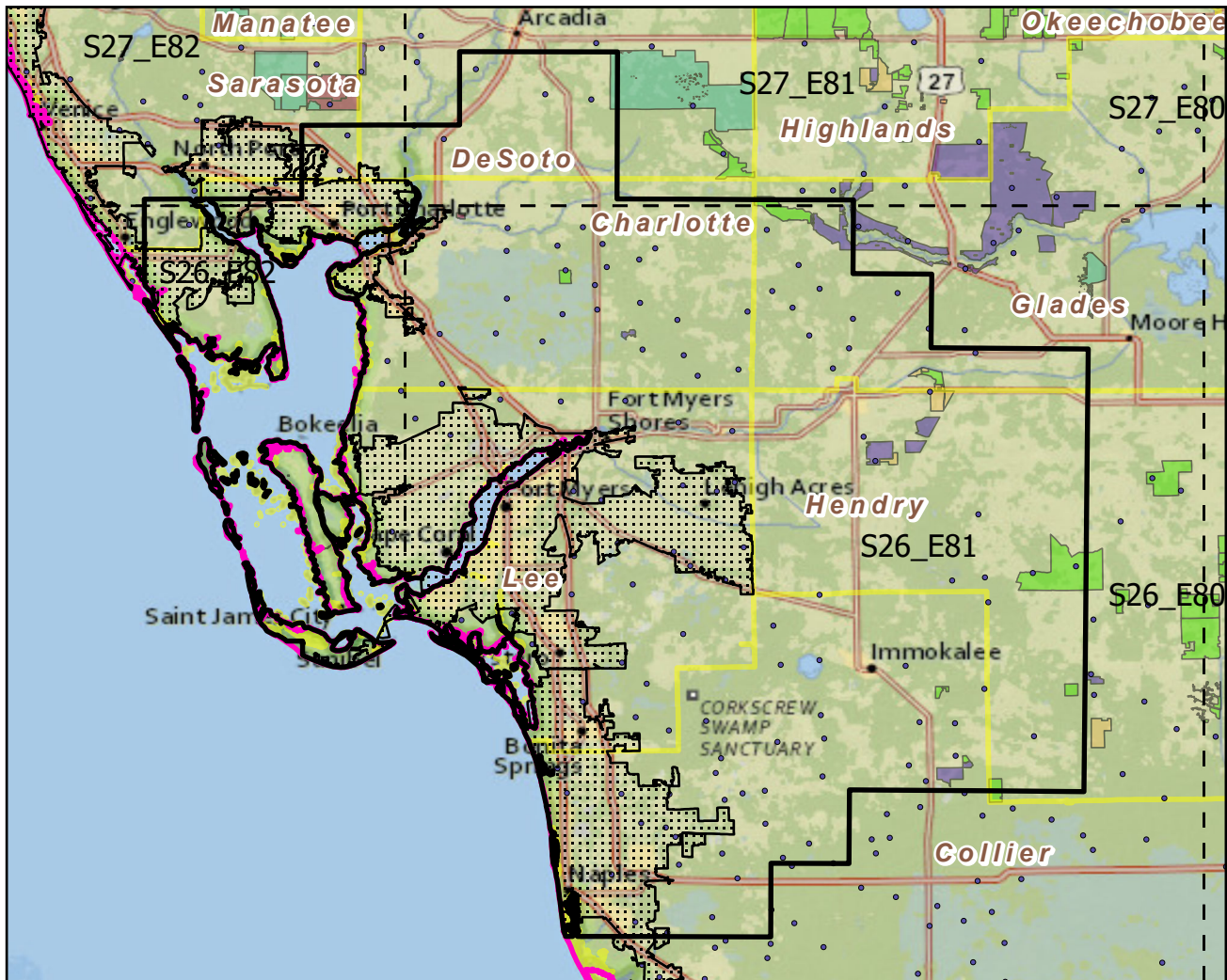
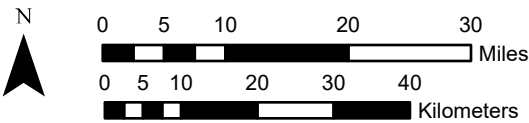


Urban Buffers with Protected Areas and Forest Inventory Plots

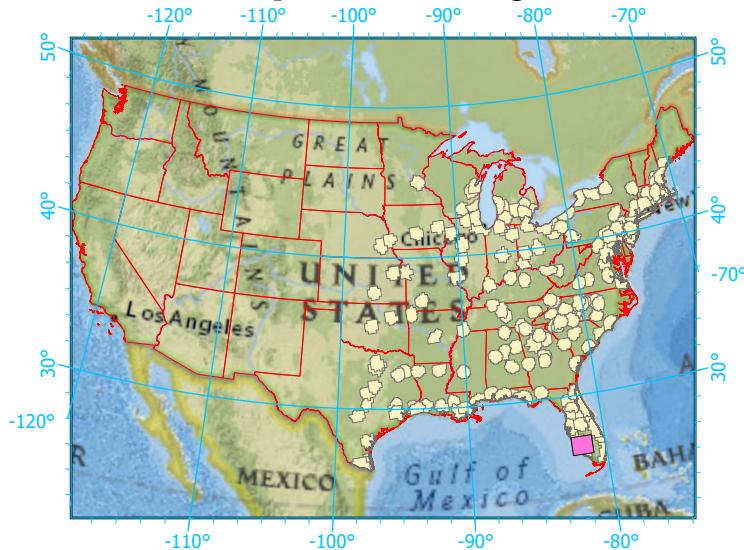


Center: 81°44'8"W 26°38'19"N
 States: Florida



Scale: 1:991,000

Index map (selected in magenta)



Legend

- Urban Areas Urban Area (sq km)=962
- Urban Buffers Buffer Area (sq km)=9137
- State Boundary Percent Urban=12%
- Forest Inventory Plots Count=132 plots
- Counties
- 1x1 Degree Grid
- Protected Areas**
- Federal
- Local Government
- Non-Governmental Organization
- Regional Agency Special District
- State

Note: This map page is intended to accompany the forest summary tables, based on the inventory plots shown. Tables are located at <https://www.fs.fed.us/nrs/atlas/combined/resources/summaries/urban/>.