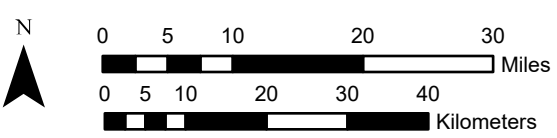
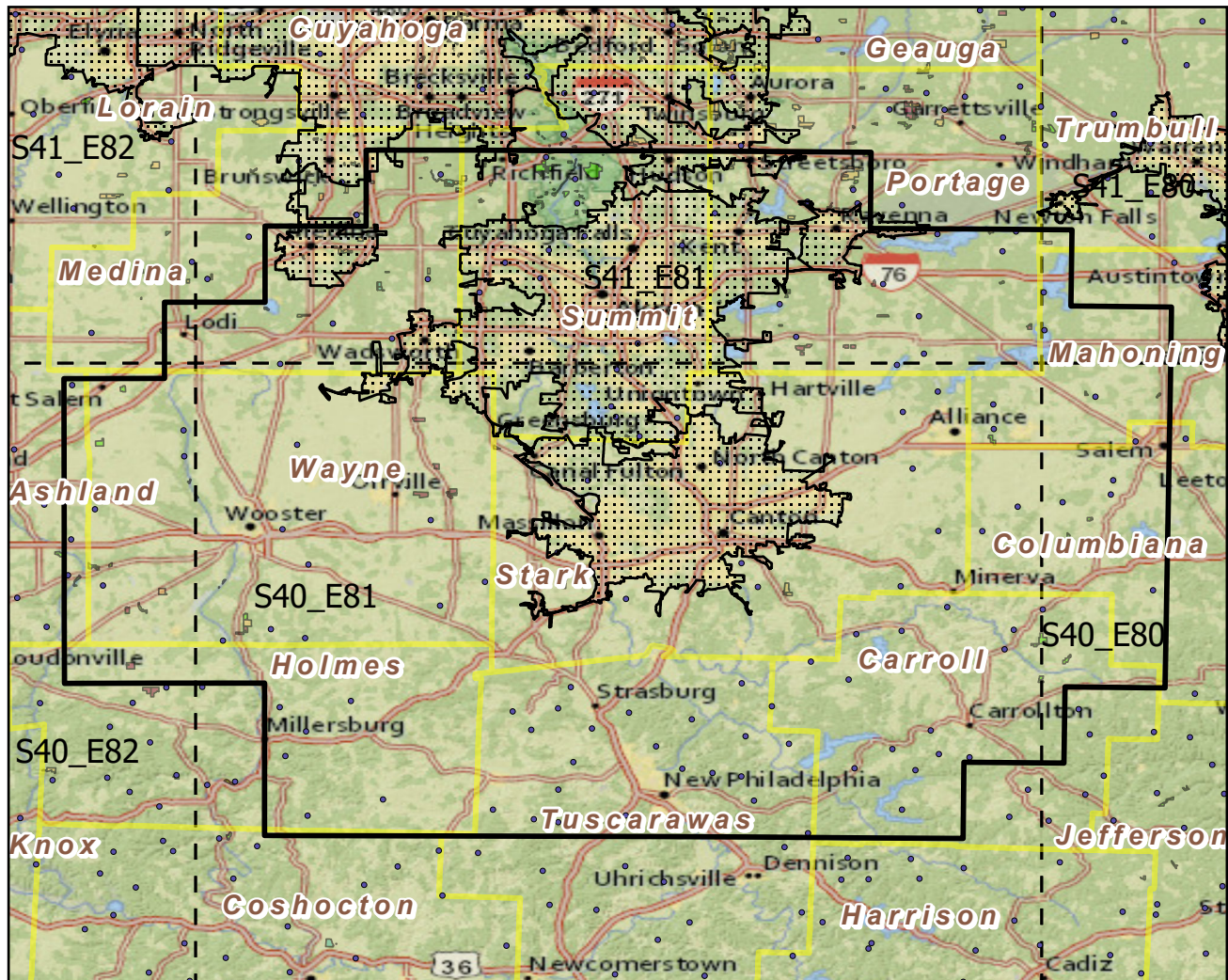


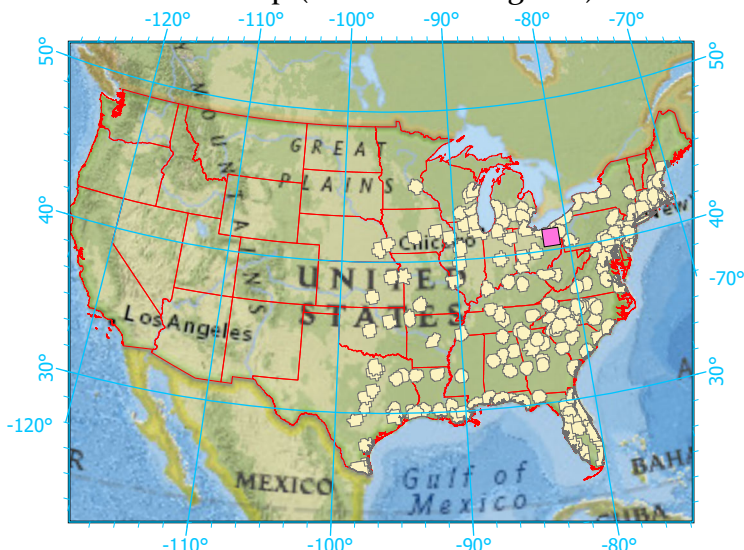
Urban Buffers with Protected Areas and Forest Inventory Plots



Center: 81°30'4"W 40°50'43"N  
 States: Ohio

Scale: 1:935,000

Index map (selected in magenta)



**Legend**

- Urban Areas      Urban Area (sq km)=434
- Urban Buffers      Buffer Area (sq km)=9137
- State Boundary      Percent Urban=5%
- Forest Inventory Plots      Count=117 plots
- Counties
- 1x1 Degree Grid

**Protected Areas**

- Federal
- Local Government
- Non-Governmental Organization
- Regional Agency Special District
- State

Note: This map page is intended to accompany the forest summary tables, based on the inventory plots shown. Tables are located at <https://www.fs.fed.us/nrs/atlas/combined/resources/summaries/urban/>.