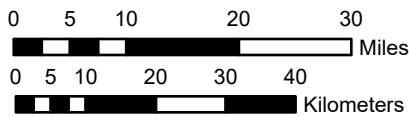
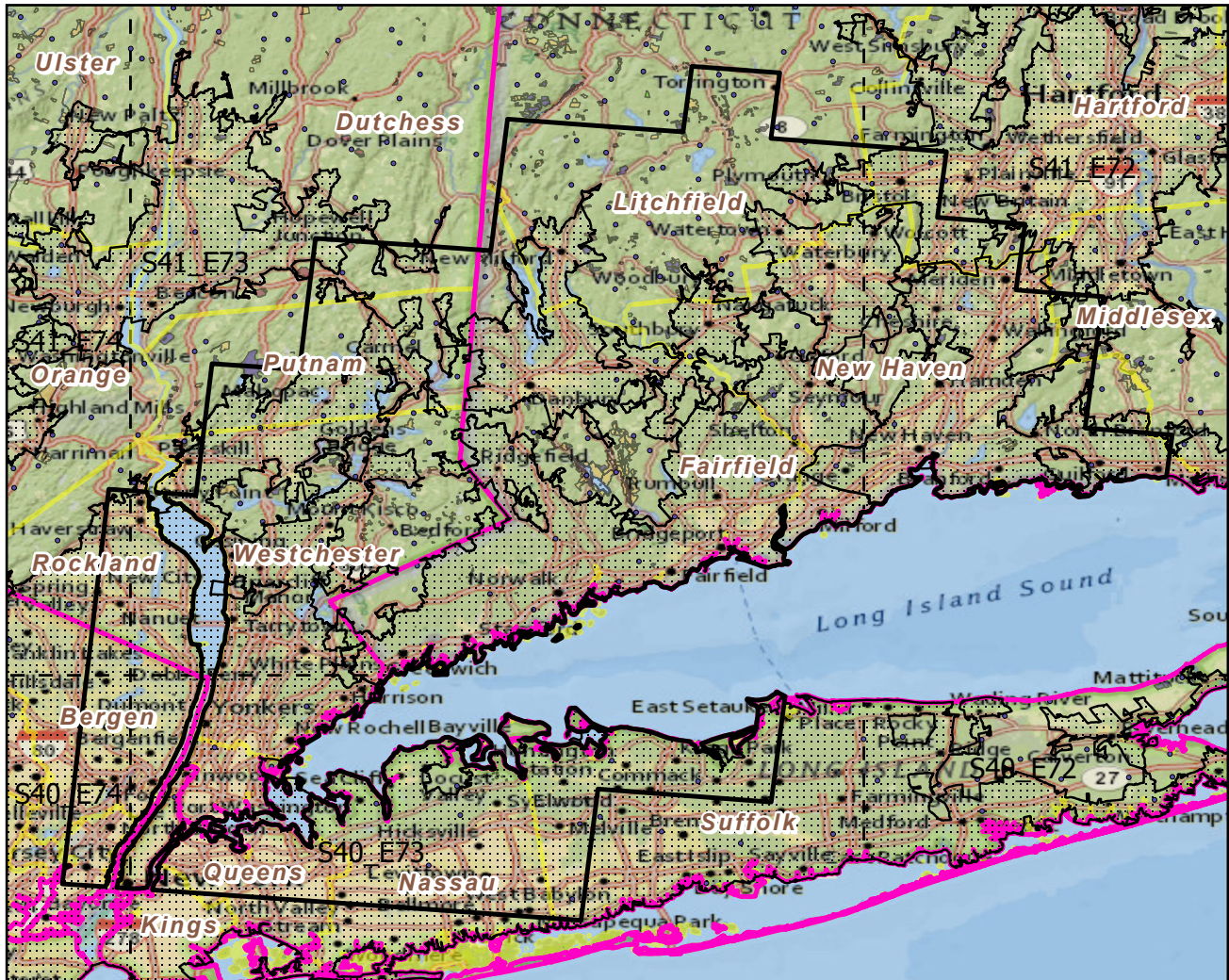


# Bridgeport--Stamford, CT--NY

Landscape Change Research Group  
 Iverson, Prasad, Peters, Matthews  
 Northern Institute of Applied Climate Science  
 USFS Northern Research Station  
 Delaware, Ohio

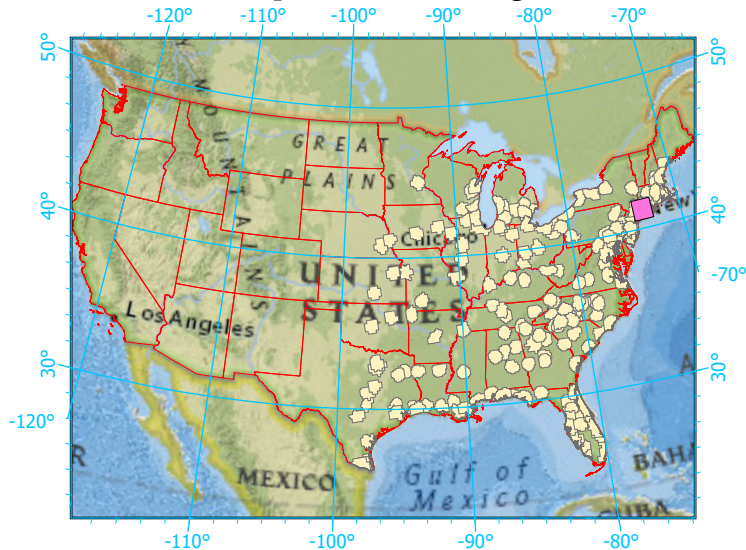
## Urban Buffers with Protected Areas and Forest Inventory Plots



Scale: 1:1,081,000

Center: 73°20'11"W 41°14'53"N  
 States: New Jersey; New York; Connecticut

Index map (selected in magenta)



### Legend

- Urban Areas      Urban Area (sq km)=1238
- Urban Buffers      Buffer Area (sq km)=9137
- State Boundary      Percent Urban=15%
- Forest Inventory Plots      Count=137 plots
- Counties
- 1x1 Degree Grid
- Protected Areas**
- Federal
- Local Government
- Non-Governmental Organization
- State

Note: This map page is intended to accompany the forest summary tables, based on the inventory plots shown. Tables are located at <https://www.fs.fed.us/nrs/atlas/combined/resources/summaries/urban/>.