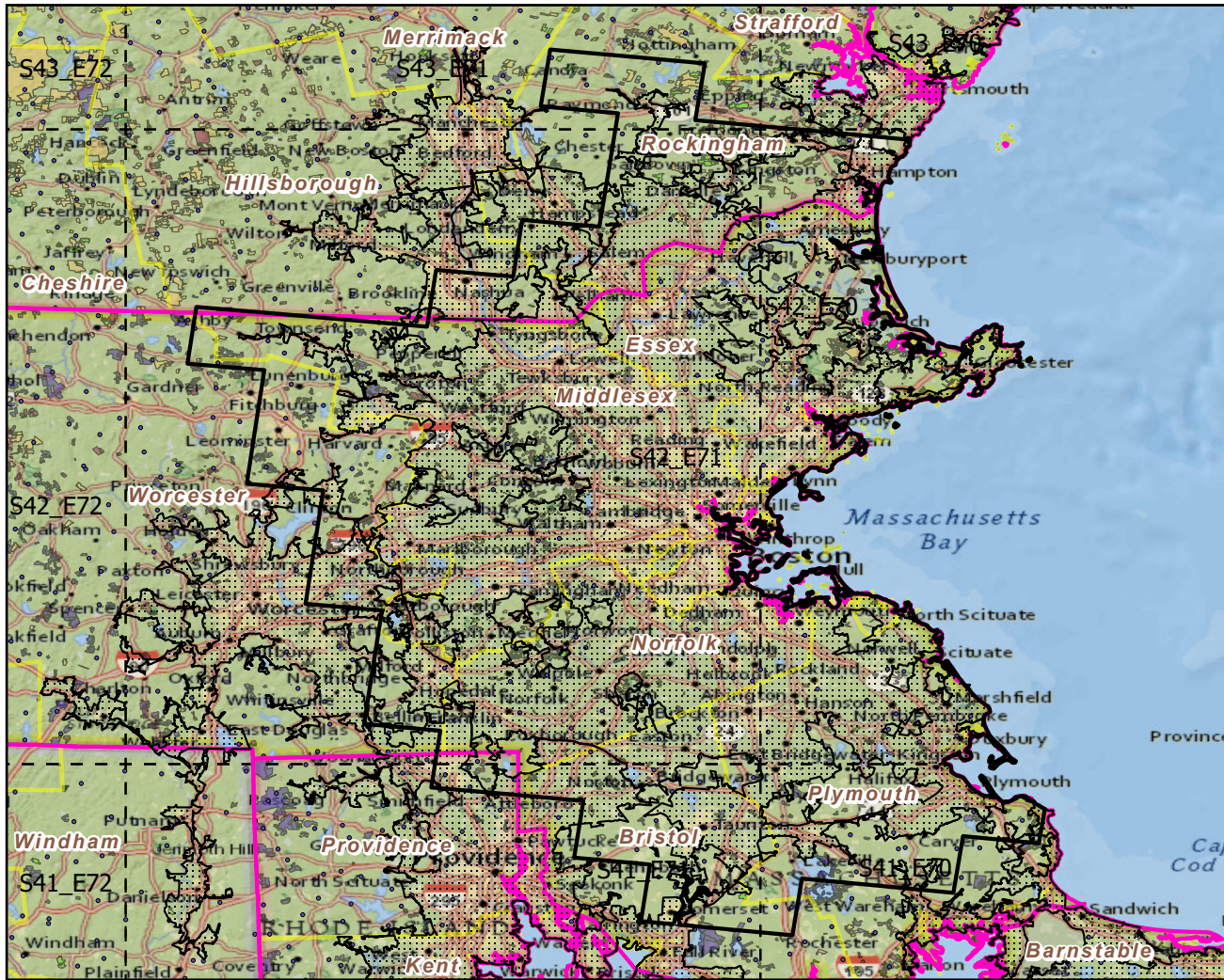
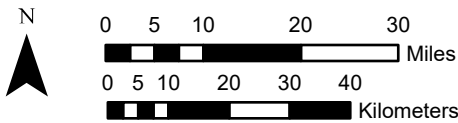


Urban Buffers with Protected Areas and Forest Inventory Plots

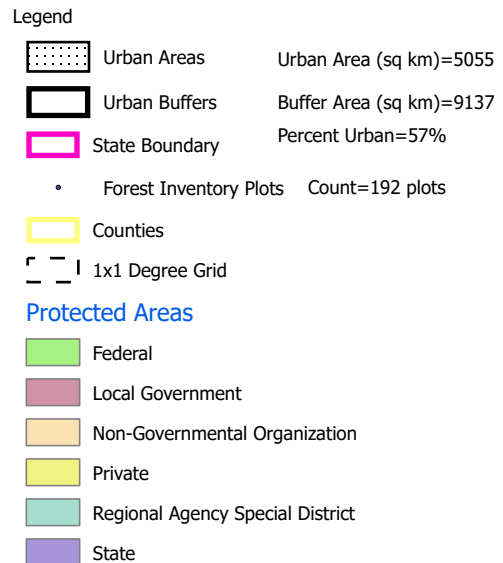
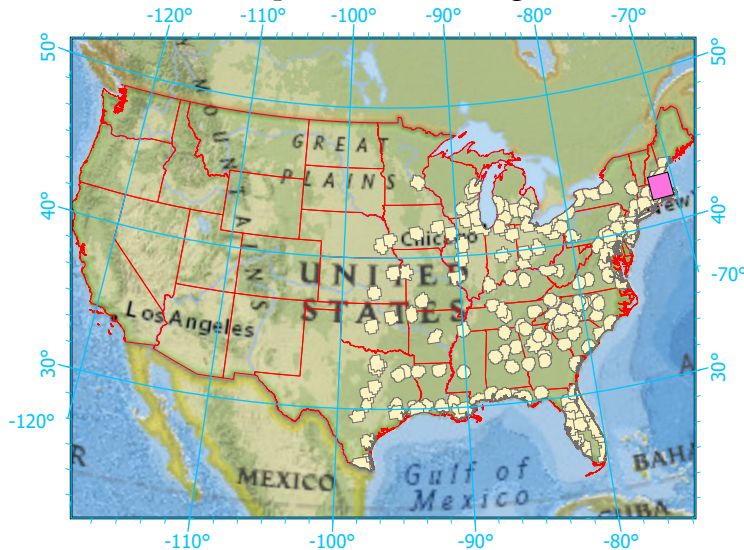


Center: 71°13'38"W 42°25'41"N  
 States: Massachusetts; Rhode Island; New Hampshire



Scale: 1:1,247,000

Index map (selected in magenta)



Note: This map page is intended to accompany the forest summary tables, based on the inventory plots shown. Tables are located at <https://www.fs.fed.us/nrs/atlas/combined/resources/summaries/urban/>.