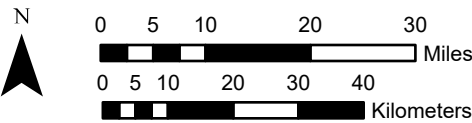
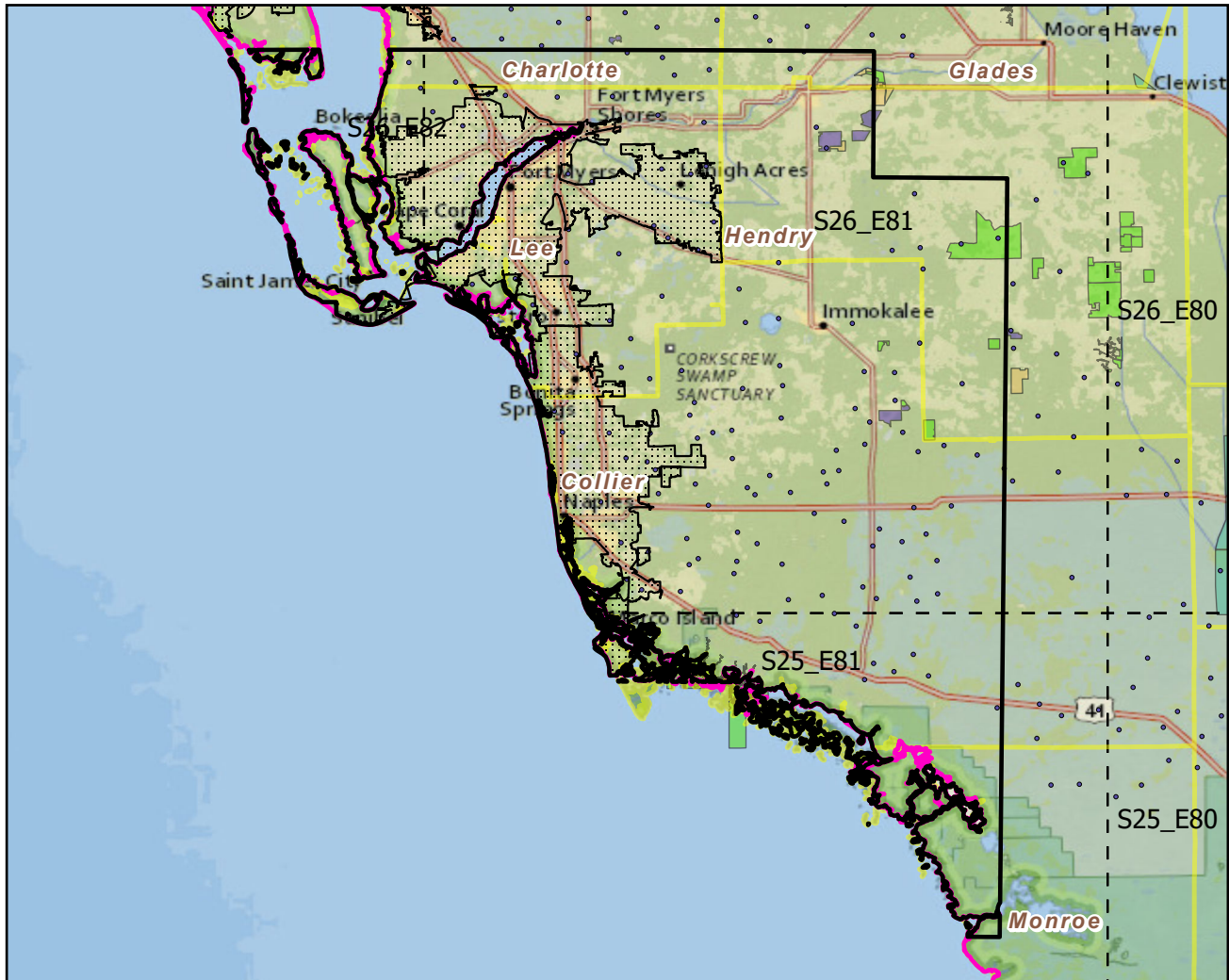


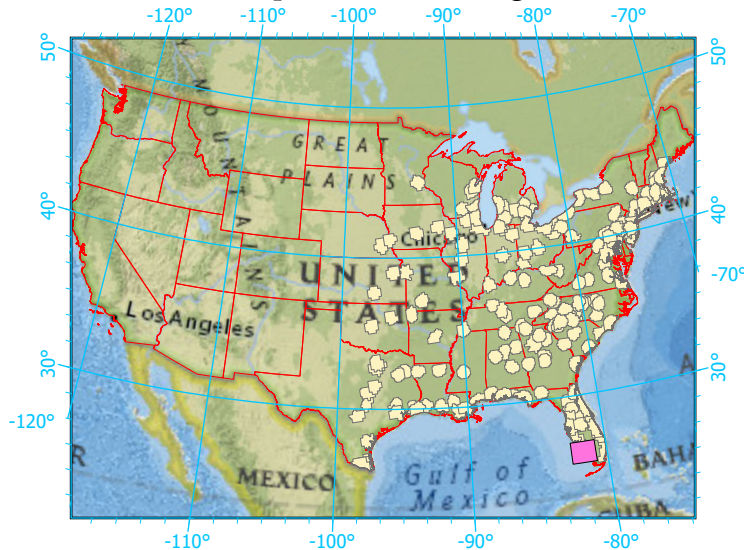
Urban Buffers with Protected Areas and Forest Inventory Plots



Center: 81°43'2"W 26°10'31"N
 States: Florida

Scale: 1:1,160,000

Index map (selected in magenta)



Note: This map page is intended to accompany the forest summary tables, based on the inventory plots shown. Tables are located at <https://www.fs.fed.us/nrs/atlas/combined/resources/summaries/urban/>.