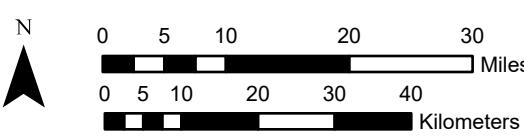
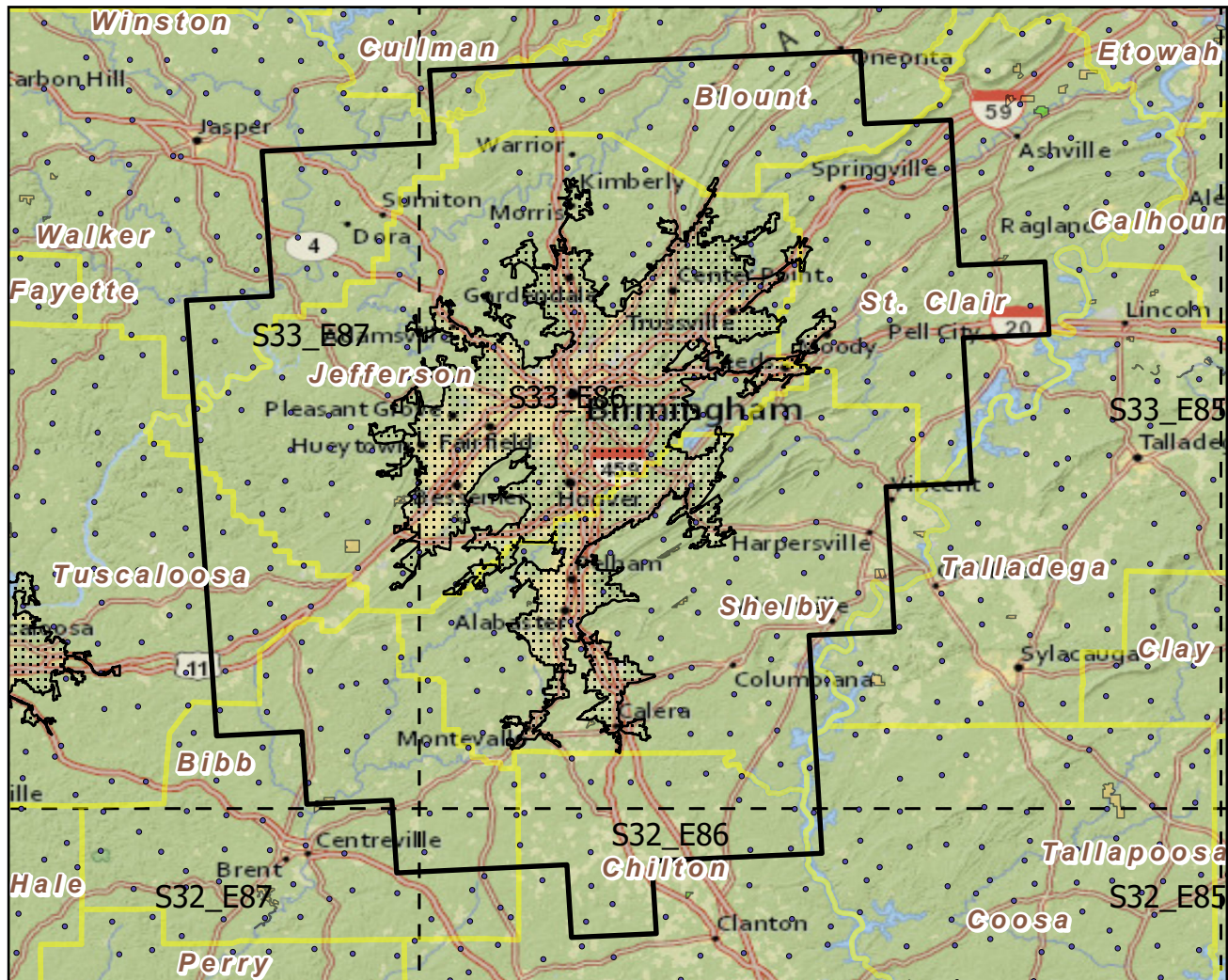


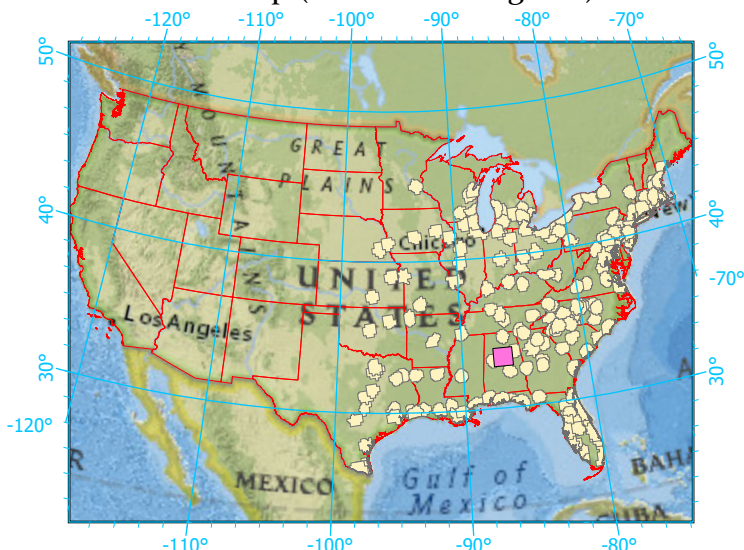
Urban Buffers with Protected Areas and Forest Inventory Plots



Center: 86°45'9"W 33°23'32"N  
 States: Alabama

Scale: 1:987,000

Index map (selected in magenta)



**Legend**

	Urban Areas	Urban Area (sq km)=1383
	Urban Buffers	Buffer Area (sq km)=9137
	State Boundary	Percent Urban=16%
	Forest Inventory Plots	Count=265 plots
	Counties	
	1x1 Degree Grid	
<b>Protected Areas</b>		
	Federal	
	Non-Governmental Organization	

Note: This map page is intended to accompany the forest summary tables, based on the inventory plots shown. Tables are located at <https://www.fs.fed.us/nrs/atlas/combined/resources/summaries/urban/>.