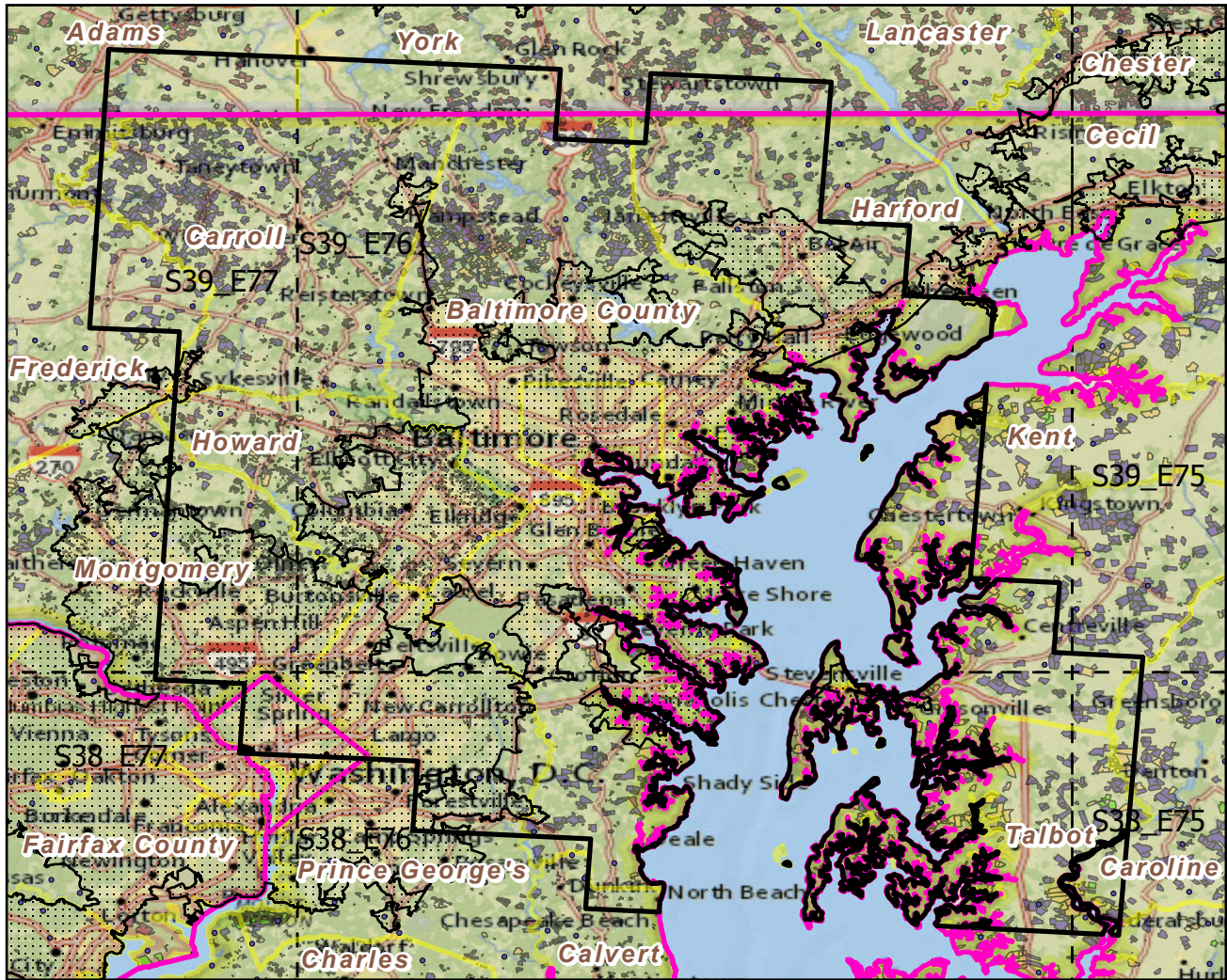


Urban Buffers with Protected Areas and Forest Inventory Plots

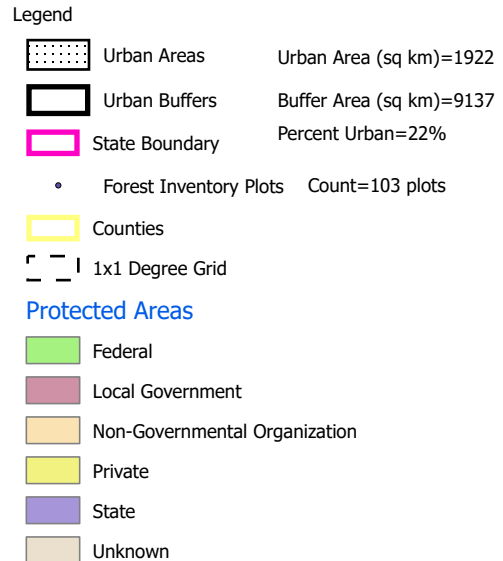
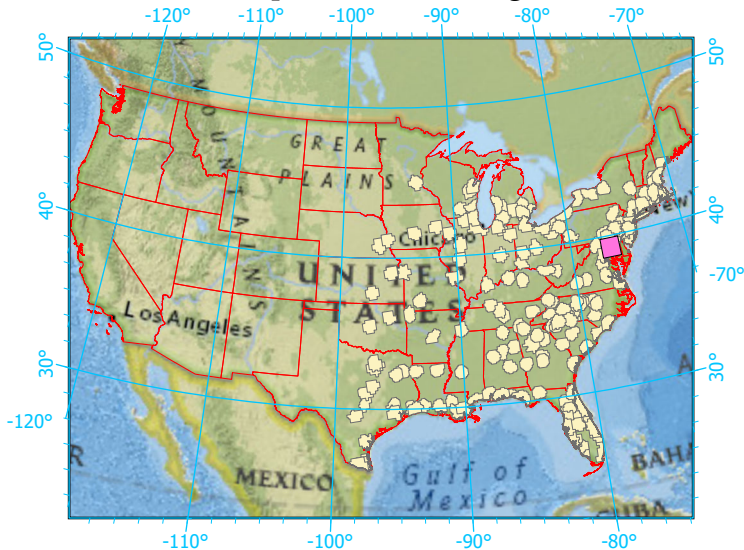


Center: 76°35'18"W 39°13'56"N
 States: Virginia; District of Columbia; Maryland;



Scale: 1:1,022,000

Index map (selected in magenta)



Note: This map page is intended to accompany the forest summary tables, based on the inventory plots shown. Tables are located at <https://www.fs.fed.us/nrs/atlas/combined/resources/summaries/urban/>.