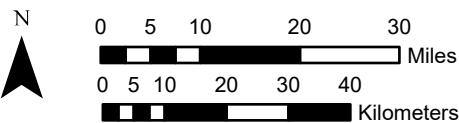
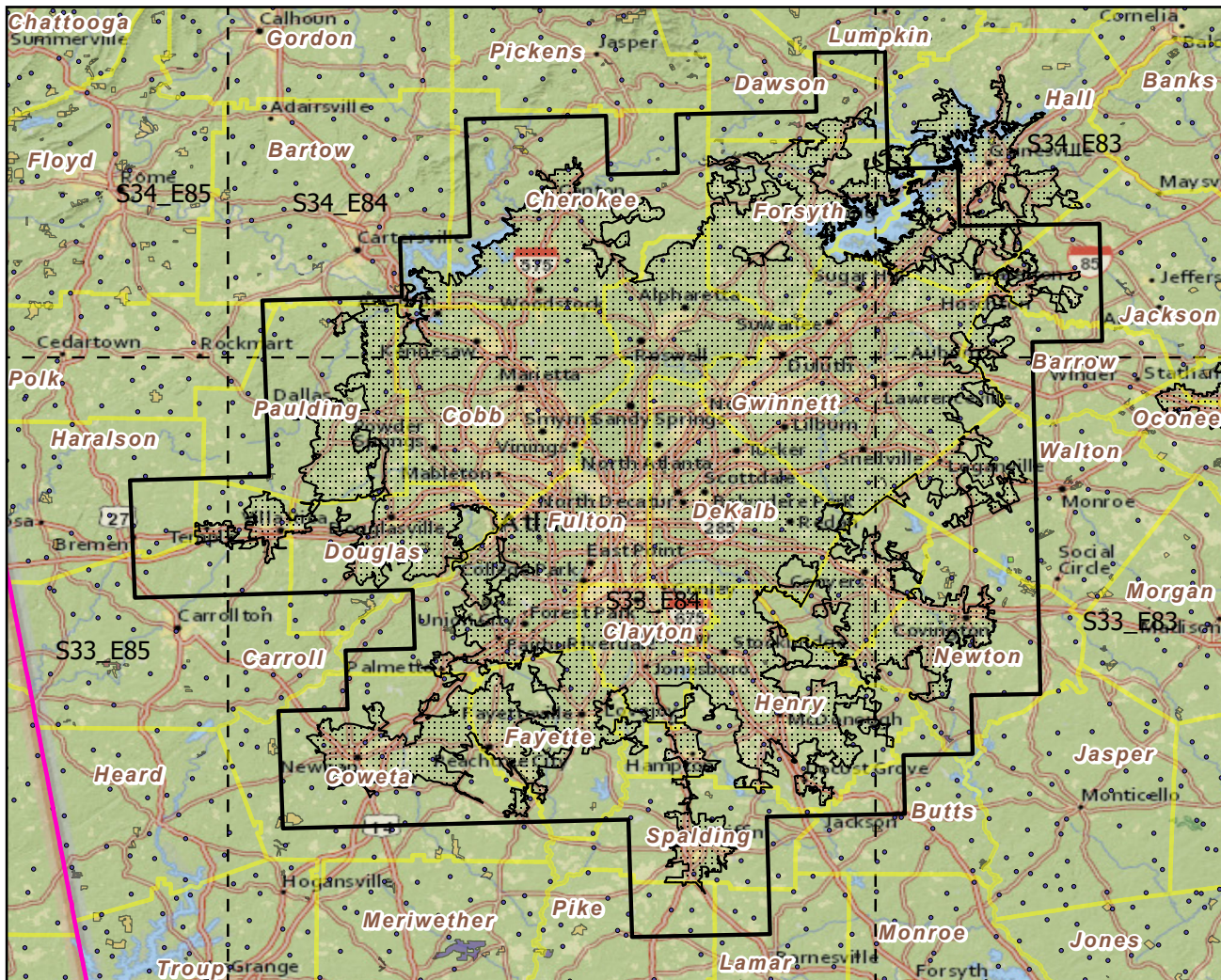


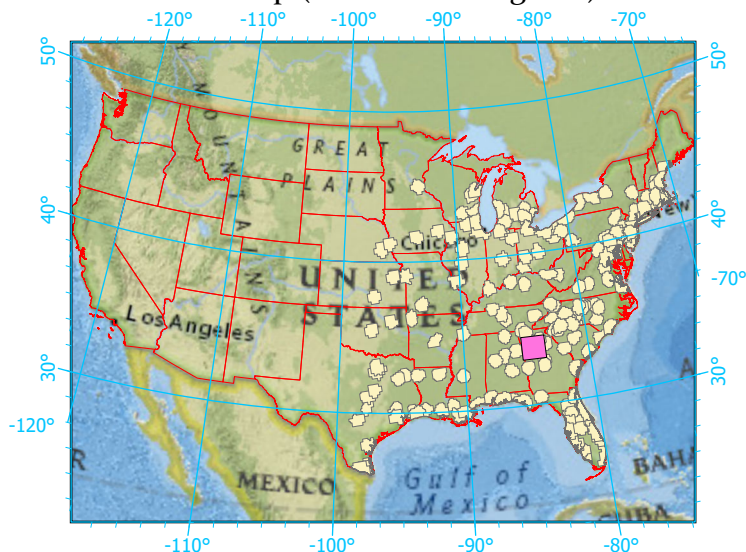
Urban Buffers with Protected Areas and Forest Inventory Plots



Scale: 1:1,222,000

Center: 84°24'2"W 33°47'19"N  
 States: Georgia

Index map (selected in magenta)



Legend

- Urban Areas      Urban Area (sq km)=6945
- Urban Buffers      Buffer Area (sq km)=9137
- State Boundary      Percent Urban=56%
- Forest Inventory Plots      Count=291 plots
- Counties
- 1x1 Degree Grid
- Protected Areas**
- Federal
- Local Government
- Non-Governmental Organization
- Private
- State
- Unknown

Note: This map page is intended to accompany the forest summary tables, based on the inventory plots shown. Tables are located at <https://www.fs.fed.us/nrs/atlas/combined/resources/summaries/urban/>.