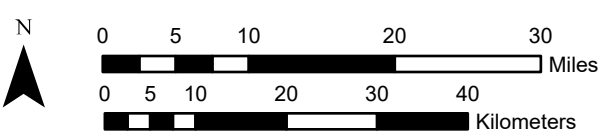
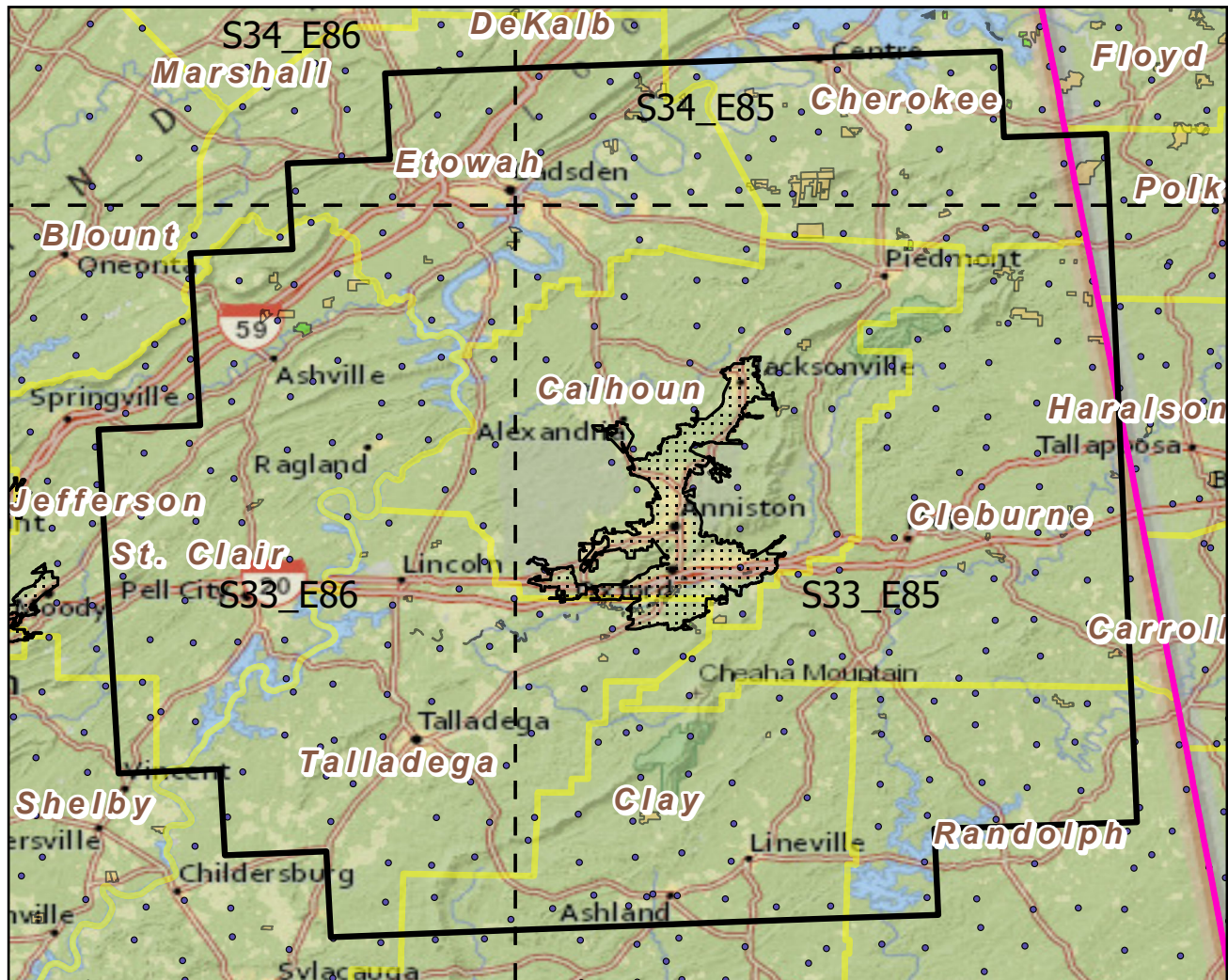


Anniston--Oxford, AL

Landscape Change Research Group
 Iverson, Prasad, Peters, Matthews
 Northern Institute of Applied Climate Science
 USFS Northern Research Station
 Delaware, Ohio

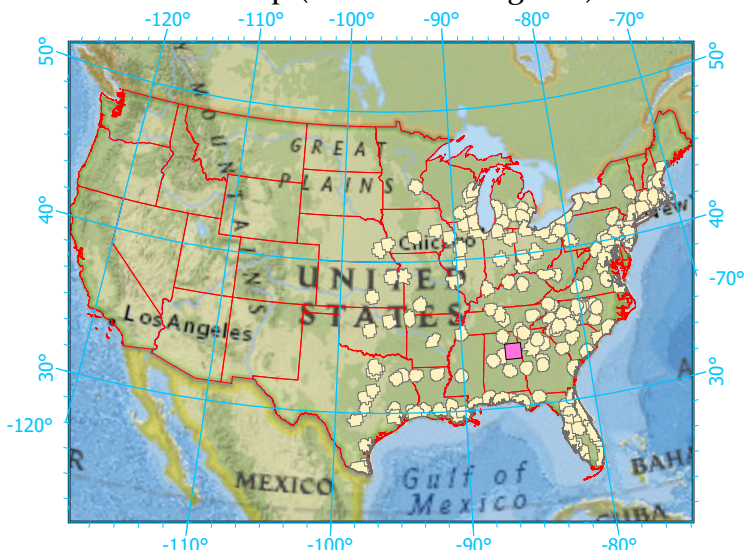
Urban Buffers with Protected Areas and Forest Inventory Plots



Center: 85°53'33"W 33°41'44"N
 States: Alabama; Georgia

Scale: 1:833,000

Index map (selected in magenta)



- Legend**
- Urban Areas Urban Area (sq km)=226
 - Urban Buffers Buffer Area (sq km)=9137
 - State Boundary Percent Urban=3%
 - Forest Inventory Plots Count=258 plots
 - Counties
 - 1x1 Degree Grid
 - Protected Areas**
 - Federal
 - Non-Governmental Organization

Note: This map page is intended to accompany the forest summary tables, based on the inventory plots shown. Tables are located at <https://www.fs.fed.us/nrs/atlas/combined/resources/summaries/urban/>.