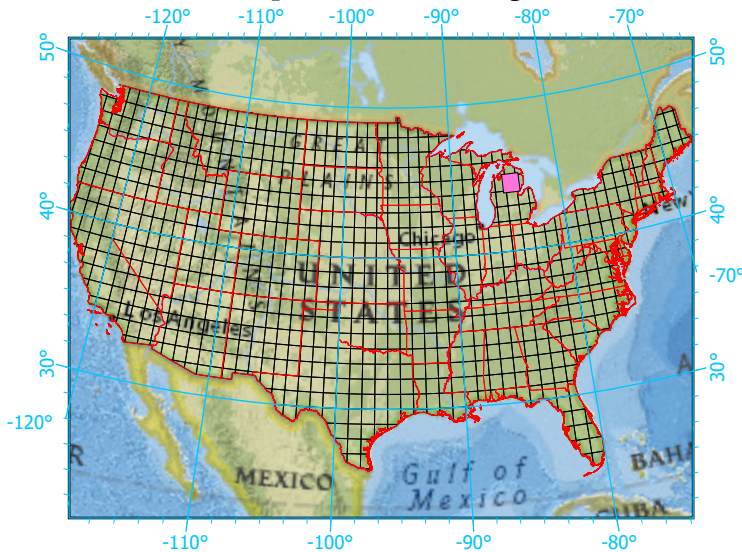


Center: 84°30'W 44°30'2"N

States: Michigan



Index map (selected in magenta)



### 1x1 Degree Grid

- 1x1 Degree Grid
- State Boundary
- USA Counties

### Protected Areas 4,366.1 km<sup>2</sup> area (49.41%)

- American Indian Lands 0.0
- Federal 674.5
- Joint 0.0
- Local Government 17.4
- Non-Governmental Organization 22.9
- Private 174.3
- Regional Agency Special District 0.0
- State 3,476.9
- Unknown 0.0