

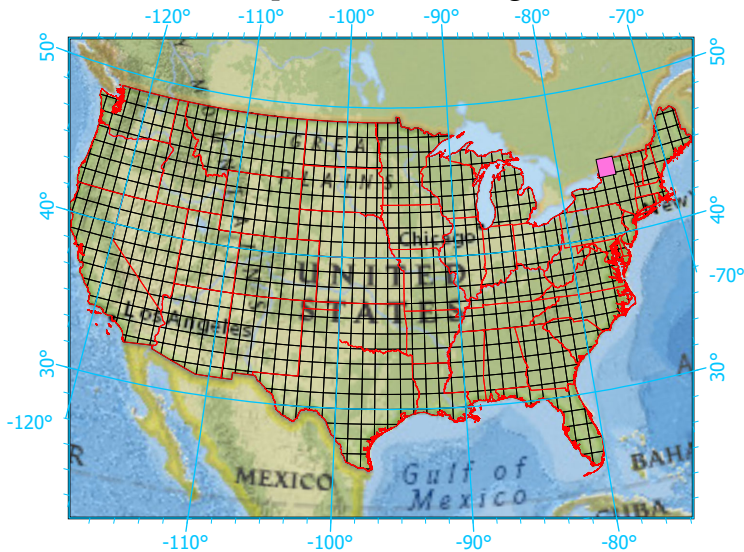
National Geographic, Esri, Garmin, HERE, UNEP-WCMC, USGS, NASA, ESA, METI, NRCAN, GEBCO, NOAA, increment P Corp.

Center: 75°30'W 44°28'58"N

States: New York



Index map (selected in magenta)



### 1x1 Degree Grid

- 1x1 Degree Grid
- State Boundary
- USA Counties

### Protected Areas 791.8 km<sup>2</sup> area (13.29%)

- American Indian Lands 0.0
- Federal 57.0
- Joint 0.0
- Local Government 9.8
- Non-Governmental Organization 5.4
- Private 1.2
- Regional Agency Special District 0.2
- State 718.3
- Unknown 0.0