

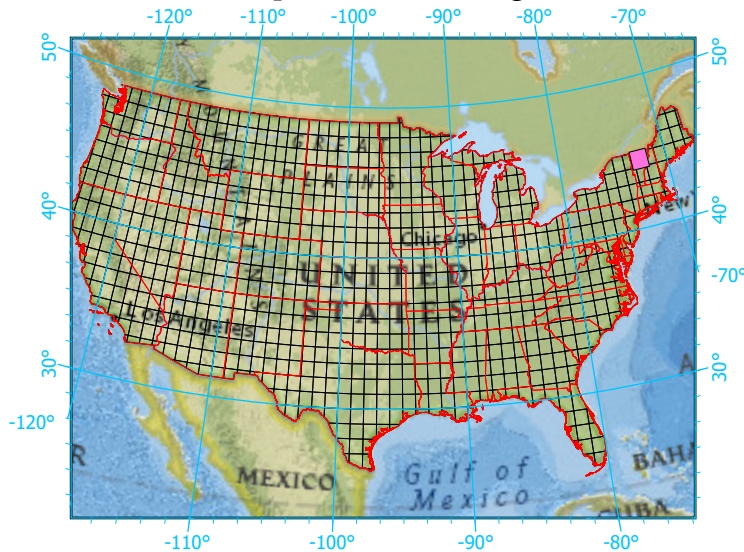
National Geographic, Esri, Garmin, HERE, UNEP-WCMC, USGS, NASA, ESA, METI, NRCAN, GEBCO, NOAA, increment P Corp.

Center: 72°30'W 44°30'2"N

States: New Hampshire; Vermont



Index map (selected in magenta)



1x1 Degree Grid

- 1x1 Degree Grid
- State Boundary
- USA Counties

Protected Areas 1,457.6 km² area (16.49%)

- American Indian Lands 0.0
- Federal 152.0
- Joint 0.0
- Local Government 71.1
- Non-Governmental Organization 565.2
- Private 0.0
- Regional Agency Special District 0.7
- State 666.0
- Unknown 2.7