

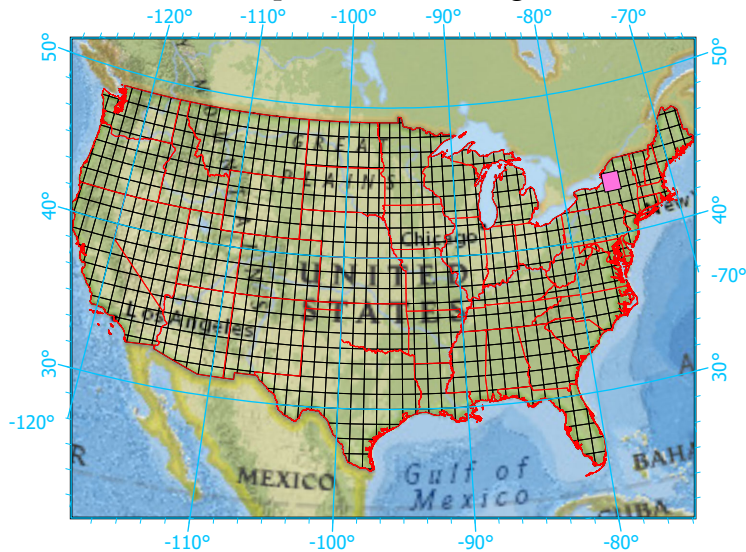
National Geographic, Esri, Garmin, HERE, UNEP-WCMC, USGS, NASA, ESA, METI, NRCAN, GEBCO, NOAA, increment P Corp.

Center: 75°30'W 43°30'2"N

States: New York



Index map (selected in magenta)



1x1 Degree Grid

- 1x1 Degree Grid
- State Boundary
- USA Counties

Protected Areas 2,056.0 km² area (22.88%)

- American Indian Lands 0.1
- Federal 26.3
- Joint 0.0
- Local Government 120.0
- Non-Governmental Organization 84.5
- Private 0.4
- Regional Agency Special District 4.4
- State 1,820.3
- Unknown 0.0