

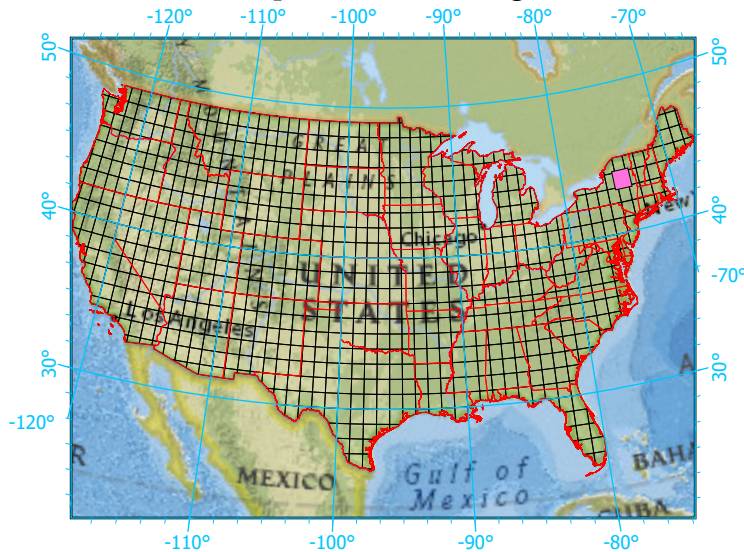
National Geographic, Esri, Garmin, HERE, UNEP-WCMC, USGS, NASA, ESA, METI, NRCAN, GEBCO, NOAA, increment P Corp.

Center: 74°30'W 43°30'2"N

States: New York



Index map (selected in magenta)



1x1 Degree Grid

- 1x1 Degree Grid
- State Boundary
- USA Counties

Protected Areas 5,778.1 km² area (64.31%)

- American Indian Lands 0.0
- Federal 4.0
- Joint 0.0
- Local Government 65.5
- Non-Governmental Organization 73.3
- Private 3.1
- Regional Agency Special District 13.6
- State 5,618.5
- Unknown 0.0