

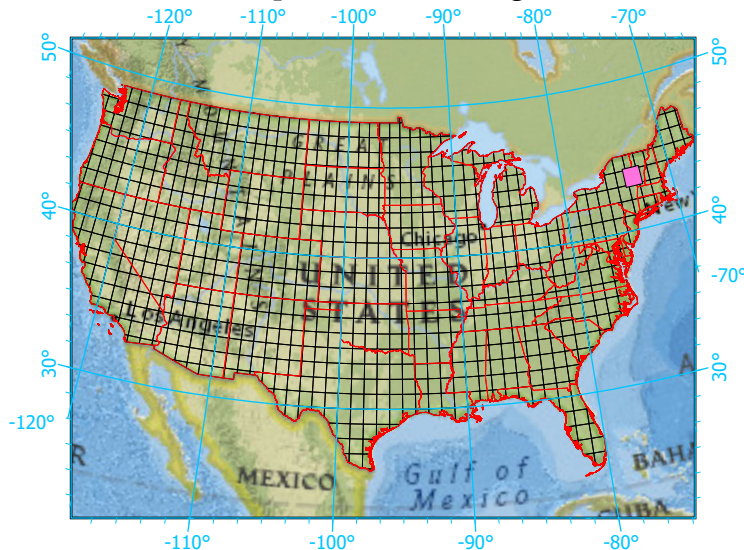
National Geographic, Esri, Garmin, HERE, UNEP-WCMC, USGS, NASA, ESA, METI, NRCAN, GEBCO, NOAA, increment P Corp.

Center: 73°30'W 43°30'2"N

States: New York; Vermont



Index map (selected in magenta)



1x1 Degree Grid

- 1x1 Degree Grid
- State Boundary
- USA Counties

Protected Areas 2,207.2 km² area (24.57%)

- American Indian Lands 0.0
- Federal 286.4
- Joint 0.0
- Local Government 65.4
- Non-Governmental Organization 395.5
- Private 0.5
- Regional Agency Special District 2.2
- State 1,456.4
- Unknown 0.8