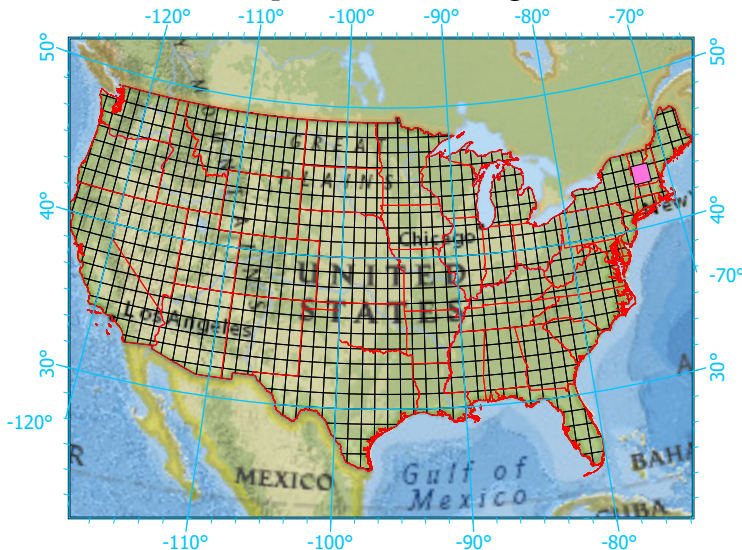


Center: 72°30'W 43°30'2"N

States: New Hampshire; Vermont



Index map (selected in magenta)



### 1x1 Degree Grid

- 1x1 Degree Grid
- State Boundary
- USA Counties

### Protected Areas 2,044.3 km<sup>2</sup> area (22.75%)

- American Indian Lands 0.0
- Federal 907.0
- Joint 0.0
- Local Government 195.2
- Non-Governmental Organization 522.8
- Private 1.5
- Regional Agency Special District 7.3
- State 409.4
- Unknown 1.0