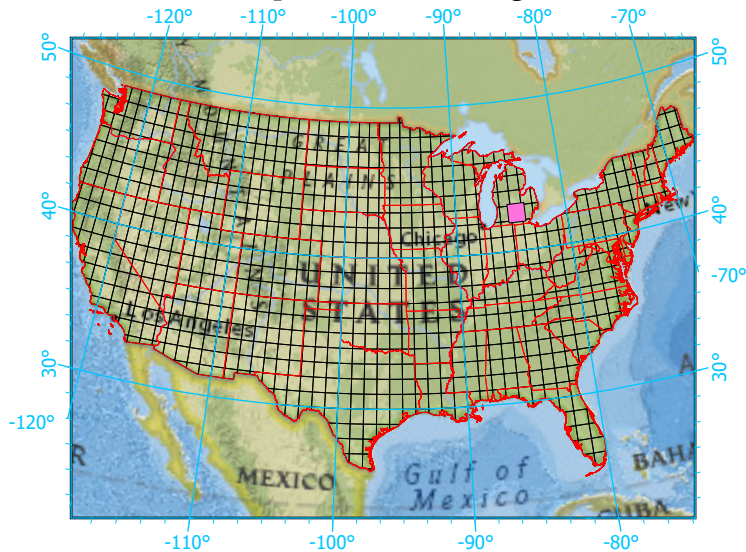


Center: 84°30'W 42°30'2"N

States: Michigan



Index map (selected in magenta)



1x1 Degree Grid

- 1x1 Degree Grid
- State Boundary
- USA Counties

Protected Areas 416.6 km² area (4.56%)

- American Indian Lands 0.0
- Federal 37.6
- Joint 0.0
- Local Government 55.8
- Non-Governmental Organization 24.1
- Private 52.8
- Regional Agency Special District 1.1
- State 245.0
- Unknown 0.0