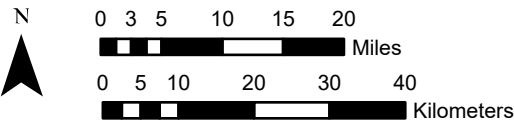


National Geographic, Esri, Garmin, HERE, UNEP/WCMC, USGS, NASA, ESA, METI, NRCAN, GEBCO, NOAA, increment P Corp.

Center: 74°30'W 42°30'2"N  
 States: New York



### 1x1 Degree Grid

- 1x1 Degree Grid
- State Boundary
- USA Counties

### Protected Areas 1,503.1 km2 area (16.46%)

- American Indian Lands 0.0
- Federal 9.3
- Joint 0.0
- Local Government 188.6
- Non-Governmental Organization 154.7
- Private 1.3
- Regional Agency Special District 5.7
- State 1,143.6
- Unknown 0.0

### Index map (selected in magenta)

