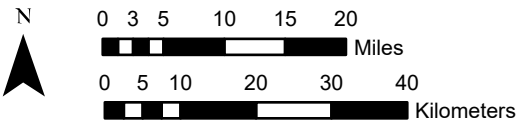


National Geographic, Esri, Garmin, HERE, UNEP-WCMC, USGS, NASA, ESA, METI, NRCAN, GEBCO, NOAA, increment P Corp.

Center: 87°30'W 41°30'N
 States: Indiana; Illinois



1x1 Degree Grid

- 1x1 Degree Grid
- State Boundary
- USA Counties

Protected Areas 533.9 km2 area (7.24%)

- American Indian Lands 0.0
- Federal 61.0
- Joint 0.1
- Local Government 132.4
- Non-Governmental Organization 49.1
- Private 39.3
- Regional Agency Special District 166.3
- State 85.7
- Unknown 0.0

Index map (selected in magenta)

