

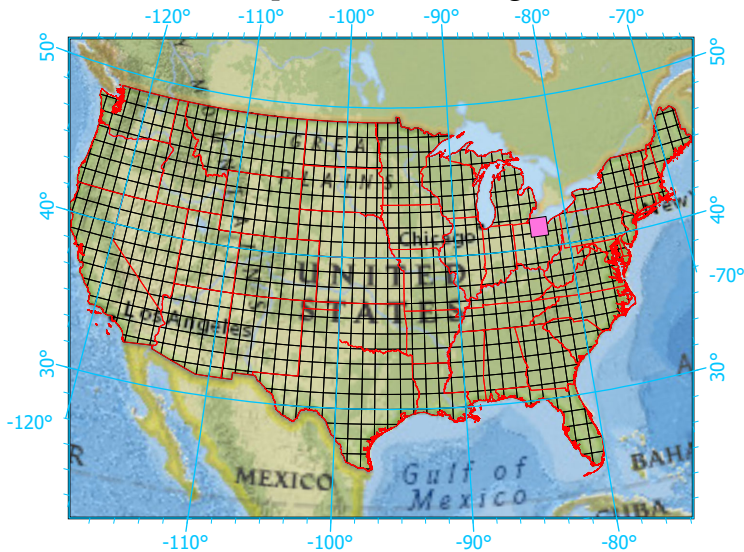
National Geographic, Esri, Garmin, HERE, UNEP-WCMC, USGS, NASA, ESA, METI, NRCAN, GEBCO, NOAA, increment P Corp.

Center: 82°30'W 41°21'44"N

States: Ohio



Index map (selected in magenta)



1x1 Degree Grid

- 1x1 Degree Grid
- State Boundary
- USA Counties

Protected Areas 178.3 km² area (4.19%)

- American Indian Lands 0.0
- Federal 8.8
- Joint 0.0
- Local Government 49.9
- Non-Governmental Organization 30.9
- Private 33.4
- Regional Agency Special District 0.1
- State 52.6
- Unknown 2.6