

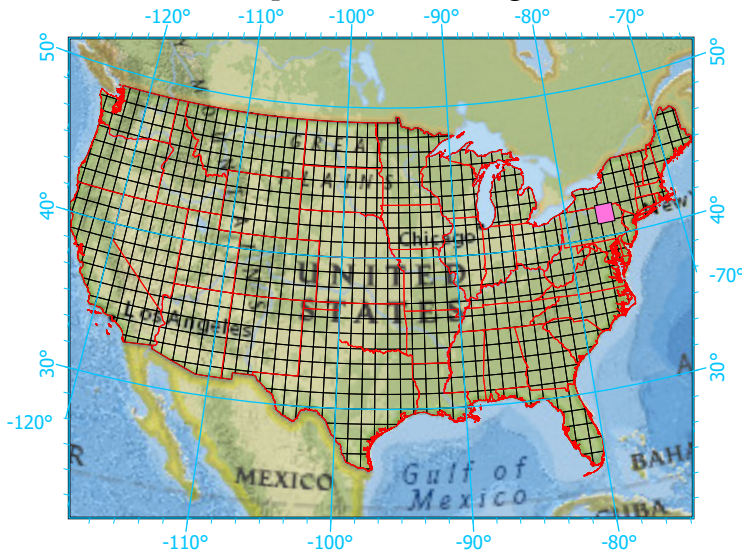
National Geographic, Esri, Garmin, HERE, UNEP-WCMC, USGS, NASA, ESA, METI, NRCAN, GEBCO, NOAA, increment P Corp.

Center: 76°30'W 41°30'2"N

States: New York; Pennsylvania



Index map (selected in magenta)



1x1 Degree Grid

- 1x1 Degree Grid
- State Boundary
- USA Counties

Protected Areas 1,467.3 km² area (15.82%)

- American Indian Lands 0.0
- Federal 4.6
- Joint 0.0
- Local Government 53.9
- Non-Governmental Organization 19.8
- Private 0.5
- Regional Agency Special District 0.0
- State 1,388.4
- Unknown 0.0