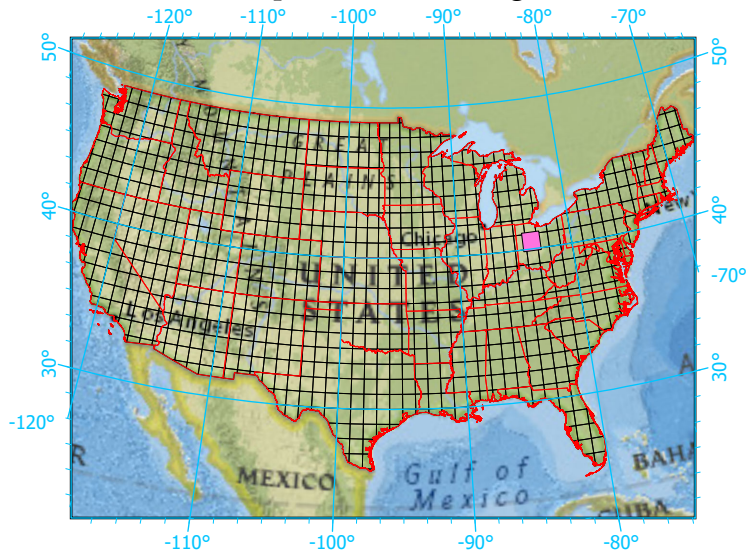


Center: 83°30'W 40°30'2"N

States: Ohio



Index map (selected in magenta)



1x1 Degree Grid

- 1x1 Degree Grid
- State Boundary
- USA Counties

Protected Areas 242.0 km² area (2.57%)

- American Indian Lands 0.0
- Federal 68.9
- Joint 0.0
- Local Government 28.0
- Non-Governmental Organization 8.6
- Private 24.9
- Regional Agency Special District 8.4
- State 103.2
- Unknown 0.0