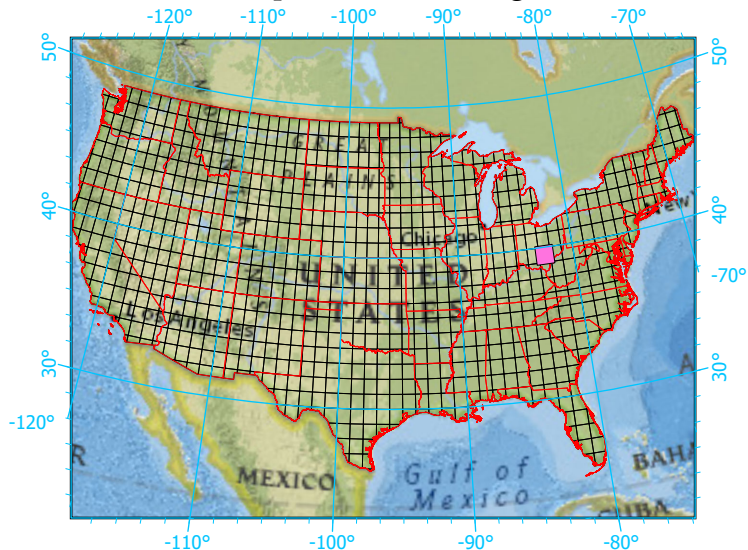


Center: 82°30'W 39°30'2"N

States: Ohio; West Virginia



Index map (selected in magenta)



### 1x1 Degree Grid

- 1x1 Degree Grid
- State Boundary
- USA Counties

Protected Areas 991.7 km<sup>2</sup> area (10.38%)

- American Indian Lands 0.0
- Federal 305.6
- Joint 0.0
- Local Government 37.3
- Non-Governmental Organization 11.9
- Private 45.6
- Regional Agency Special District 38.7
- State 552.7
- Unknown 0.0