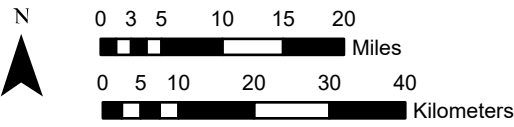


National Geographic, Esri, Garmin, HERE, Bing, WGC, USGS, NASA, ESA, METI, NRCAN, GEBCO, NOAA, iNaturalist, P Corp.

Center: 83°30'W 37°30'2"N  
 States: Kentucky



### 1x1 Degree Grid

- 1x1 Degree Grid
- State Boundary
- USA Counties

### Protected Areas 1,135.4 km2 area (11.57%)

- American Indian Lands 0.0
- Federal 994.0
- Joint 22.8
- Local Government 0.4
- Non-Governmental Organization 4.4
- Private 1.3
- Regional Agency Special District 0.0
- State 112.5
- Unknown 0.0

### Index map (selected in magenta)

