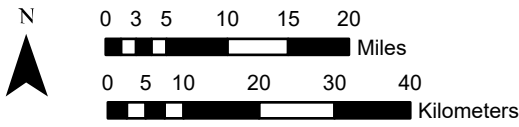


National Geographic, Esri, Garmin, HERE, UNEP-WCMC, USGS, NASA, ESA, METI, NRCAN, GEBCO, NOAA, increment P Corp.

Center: 90°30'W 36°30'2"N
 States: Arkansas; Missouri



1x1 Degree Grid

- 1x1 Degree Grid
- State Boundary
- USA Counties

Protected Areas 1,050.5 km2 area (10.57%)

- American Indian Lands 0.0
- Federal 774.3
- Joint 0.0
- Local Government 0.0
- Non-Governmental Organization 11.3
- Private 0.0
- Regional Agency Special District 0.0
- State 127.1
- Unknown 137.8

Index map (selected in magenta)

