

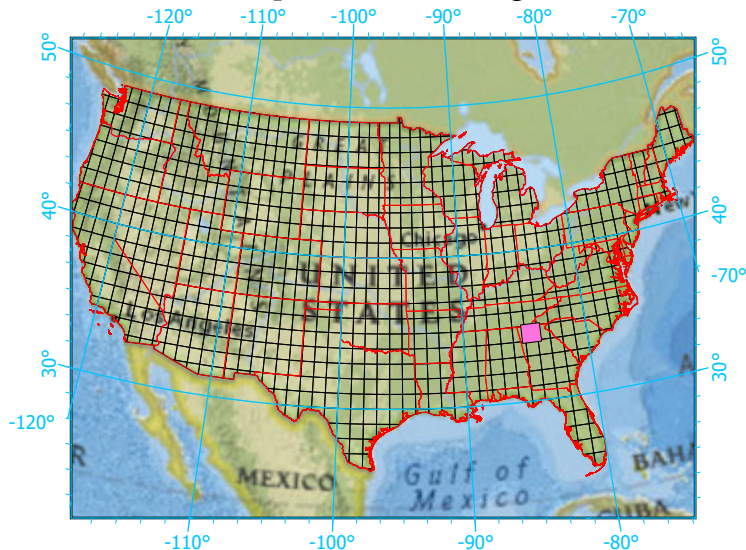
National Geographic, Esri, Garmin, HERE, UNEP-WCMC, USGS, NASA, ESA, METI, NRCAN, GEBCO, NOAA, increment P Corp.

Center: 84°30'W 34°30'2"N

States: Georgia; Tennessee; North



Index map (selected in magenta)



1x1 Degree Grid

- 1x1 Degree Grid
- State Boundary
- USA Counties

Protected Areas 1,910.2 km² area (18.75%)

- American Indian Lands 0.0
- Federal 1,502
- Joint 0.0
- Local Government 57.3
- Non-Governmental Organization 44.9
- Private 9.6
- Regional Agency Special District 0.0
- State 295.6
- Unknown 0.0