

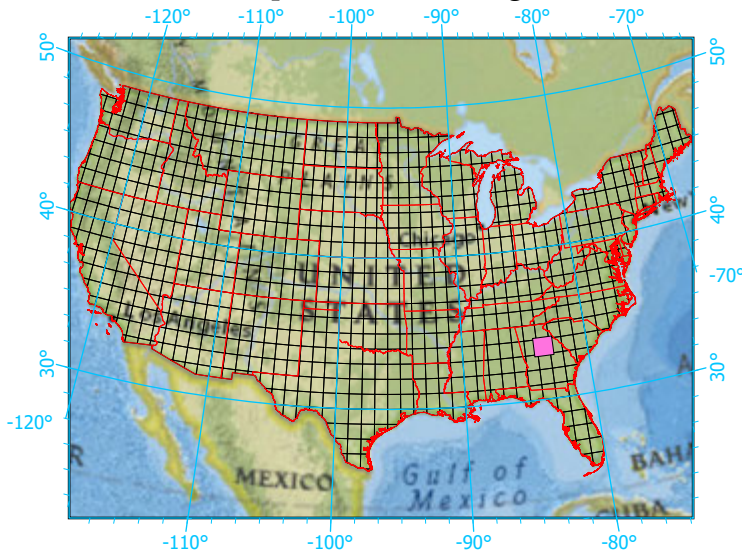
National Geographic, Esri, Garmin, HERE, UNEP-WCMC, USGS, NASA, ESA, METI, NRCAN, GEBCO, NOAA, increment P Corp.

Center: 83°30'W 33°30'N

States: Georgia



Index map (selected in magenta)



### 1x1 Degree Grid

- 1x1 Degree Grid
- State Boundary
- USA Counties

### Protected Areas 993.6 km2 area (9.64%)

- American Indian Lands 0.0
- Federal 619.9
- Joint 0.0
- Local Government 37.6
- Non-Governmental Organization 86.5
- Private 0.8
- Regional Agency Special District 0.0
- State 248.8
- Unknown 0.0