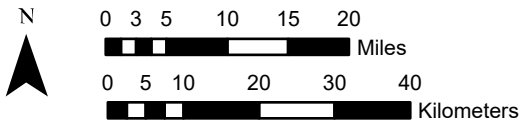


National Geographic, Esri, Garmin, HERE, UNEP-WCMC, USGS, NASA, ESA, METI, NRCAN, GEBCO, NOAA, increment P Corp.

Center: 97°30'W 32°30'N
 States: Texas



1x1 Degree Grid

- 1x1 Degree Grid
- State Boundary
- USA Counties

Protected Areas 283.1 km2 area (2.72%)

- American Indian Lands 0.0
- Federal 191.0
- Joint 0.0
- Local Government 80.5
- Non-Governmental Organization 1.7
- Private 0.1
- Regional Agency Special District 1.2
- State 8.6
- Unknown 0.0

Index map (selected in magenta)

