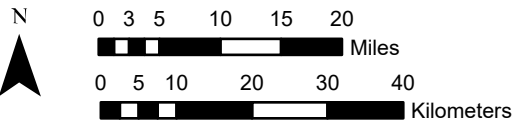


National Geographic, Esri, Garmin, HERE, UNEP-WCMC, USGS, NASA, ESA, METI, NRCAN, GEBCO, NOAA, increment P Corp.

Center: 96°30'W 32°30'2"N
 States: Texas



1x1 Degree Grid

- 1x1 Degree Grid
- State Boundary
- USA Counties

Protected Areas 196.0 km2 area (1.88%)

- American Indian Lands 0.0
- Federal 69.8
- Joint 0.0
- Local Government 107.5
- Non-Governmental Organization 4.6
- Private 0.1
- Regional Agency Special District 0.0
- State 13.9
- Unknown 0.0

Index map (selected in magenta)

