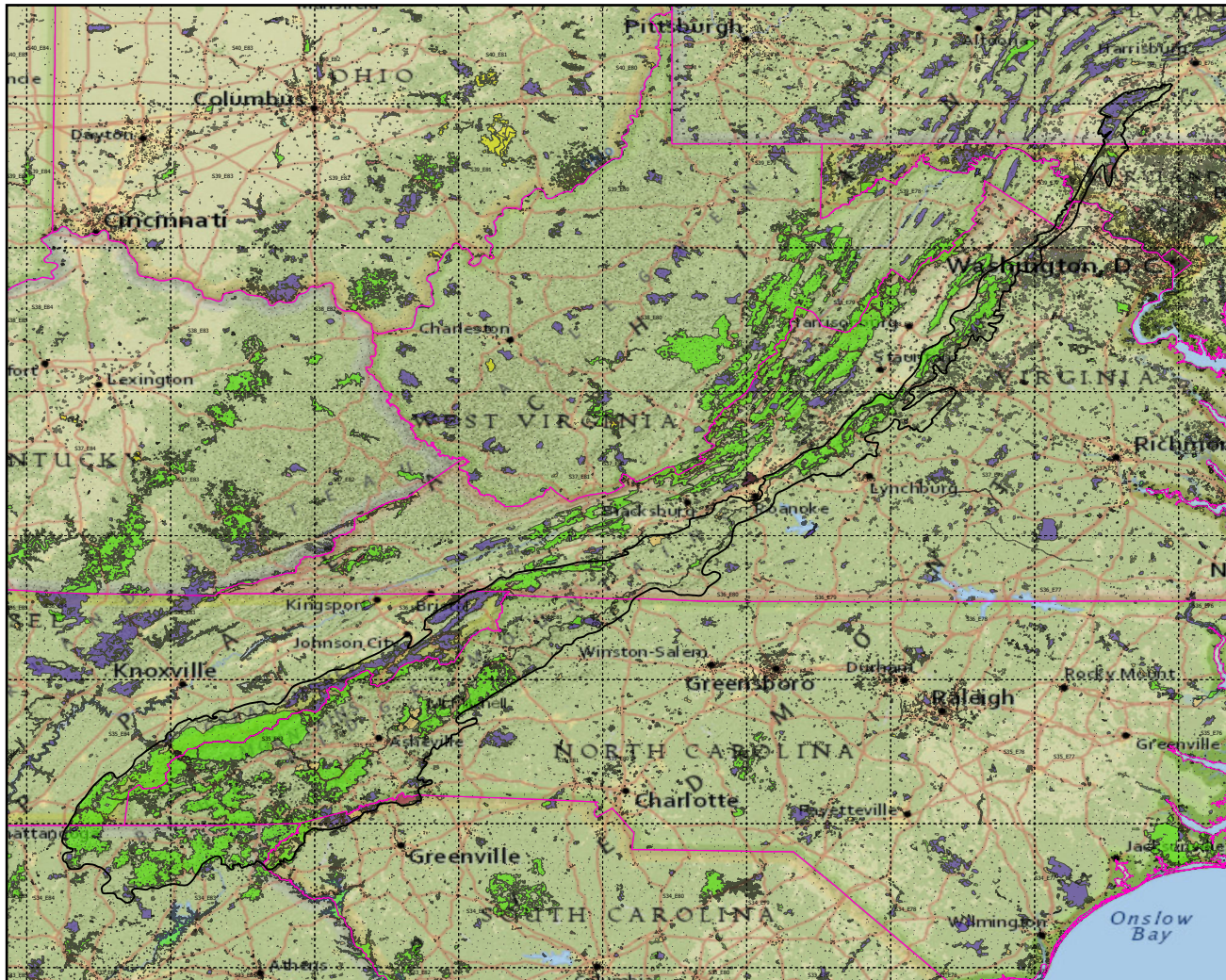
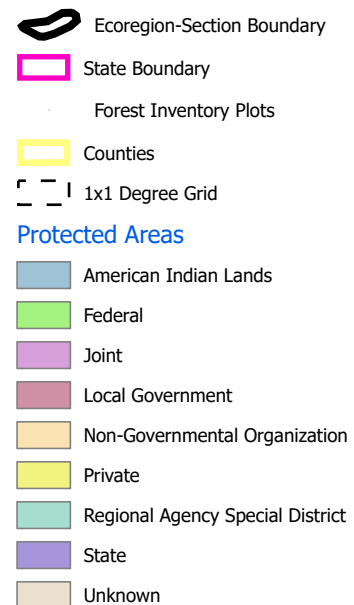
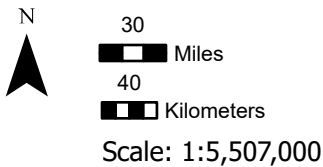


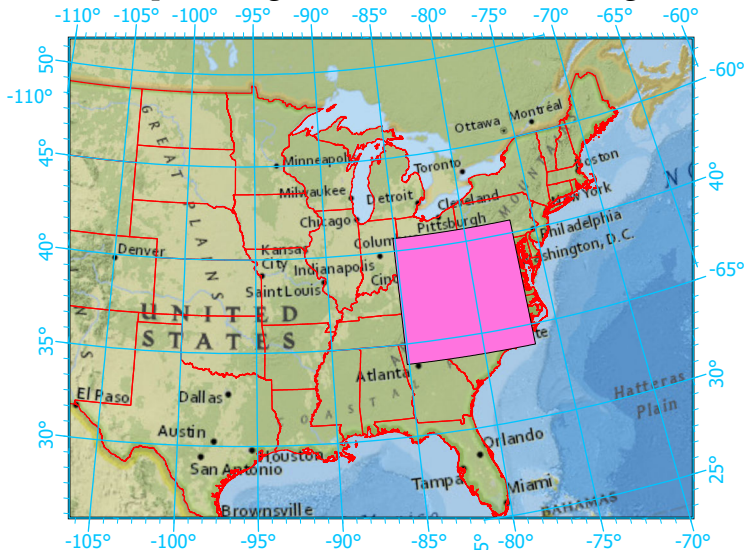
Ecoregions with Protected Areas and Forest Inventory Plots



Center: 80°53'57"W 37°17'39"N
 States: Georgia; South Carolina; Tennessee; North



Index map (Ecoregion area identified in magenta)



Note: This map page is intended to accompany the forest summary tables, based on the inventory plots shown (approximately). Tables are located at <https://www.fs.fed.us/nrs/atlas/combined/resources/summaries/ecomap/>. Based on the US Forest Service Ecoregional Sections, 2007.