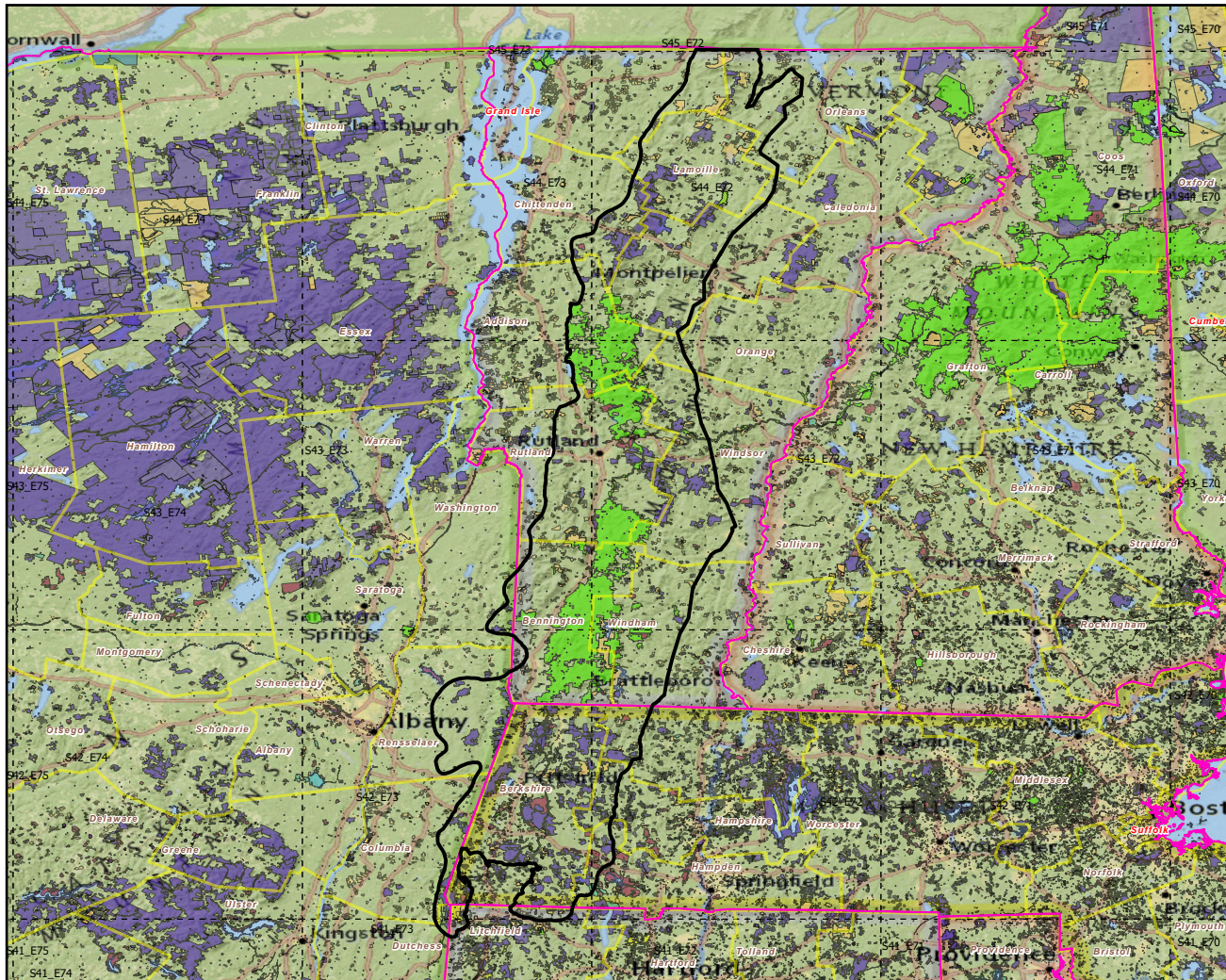


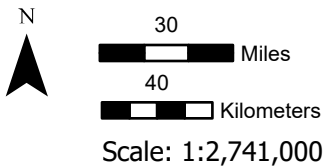
# M211C Green-Taconic-Berkshire Mountains

Landscape Change Research Group  
Iverson, Prasad, Peters, Matthews  
Northern Institute of Applied Climate Science  
USFS Northern Research Station  
Delaware, Ohio

## Ecoregions with Protected Areas and Forest Inventory Plots

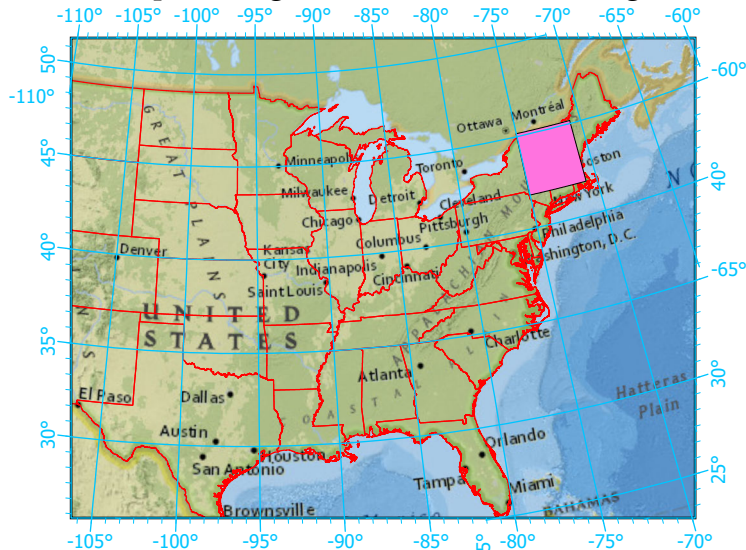


Center: 72°54'42"W 43°28'18"N  
States: New York; Connecticut; Massachusetts;



- Ecoregion-Section Boundary
- State Boundary
- Forest Inventory Plots
- Counties
- 1x1 Degree Grid
- Protected Areas**
  - American Indian Lands
  - Federal
  - Joint
  - Local Government
  - Non-Governmental Organization
  - Private
  - Regional Agency Special District
  - State
  - Unknown

### Index map (Ecoregion area identified in magenta)



Note: This map page is intended to accompany the forest summary tables, based on the inventory plots shown (approximately). Tables are located at <https://www.fs.fed.us/nrs/atlas/combined/resources/summaries/ecomap/>. Based on the US Forest Service Ecoregional Sections, 2007.