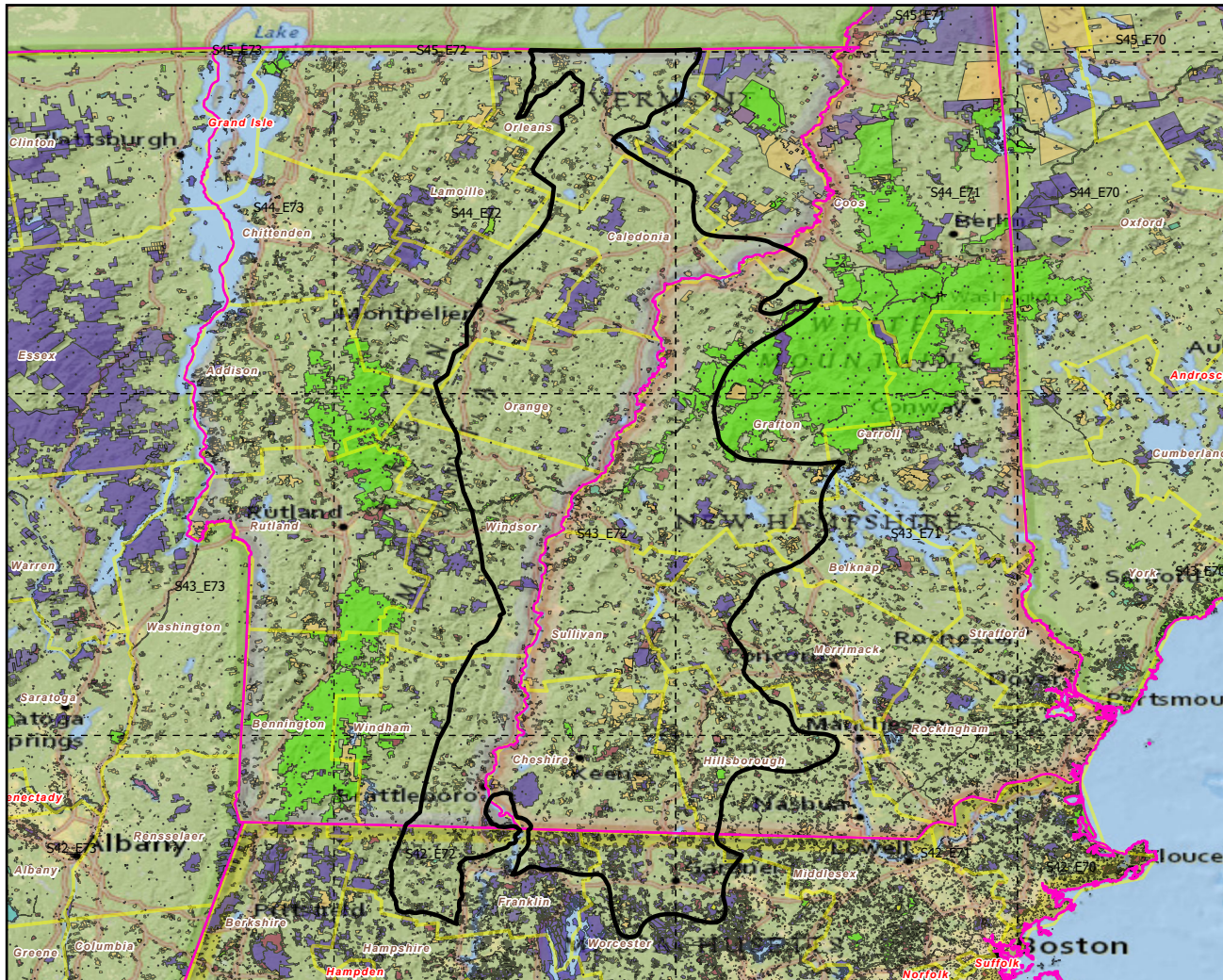


Ecoregions with Protected Areas and Forest Inventory Plots



Center: 72°10'18"W 43°42'29"N

States: Massachusetts; New Hampshire; Vermont

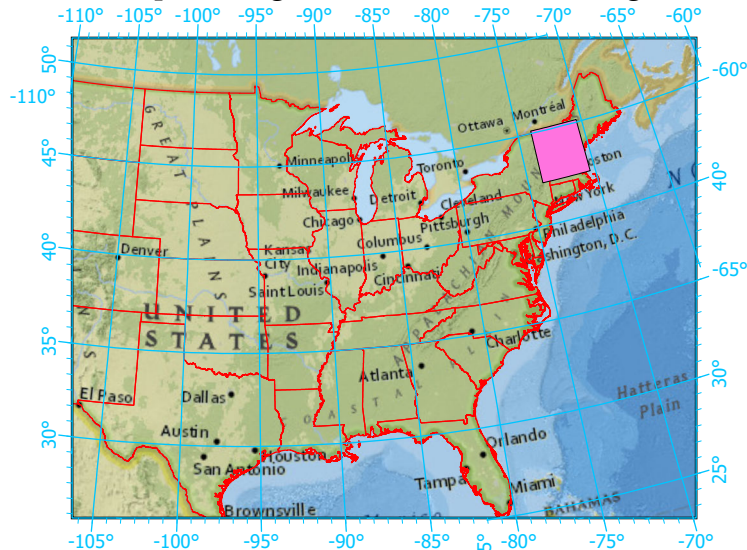


30 Miles

40 Kilometers

Scale: 1:2,320,000

Index map (Ecoregion area identified in magenta)



Ecoregion-Section Boundary

State Boundary

Forest Inventory Plots

Counties

1x1 Degree Grid

Protected Areas

- American Indian Lands
- Federal
- Joint
- Local Government
- Non-Governmental Organization
- Private
- Regional Agency Special District
- State
- Unknown

Note: This map page is intended to accompany the forest summary tables, based on the inventory plots shown (approximately). Tables are located at <https://www.fs.fed.us/nrs/atlas/combined/resources/summaries/ecomap/>. Based on the US Forest Service Ecoregional Sections, 2007.