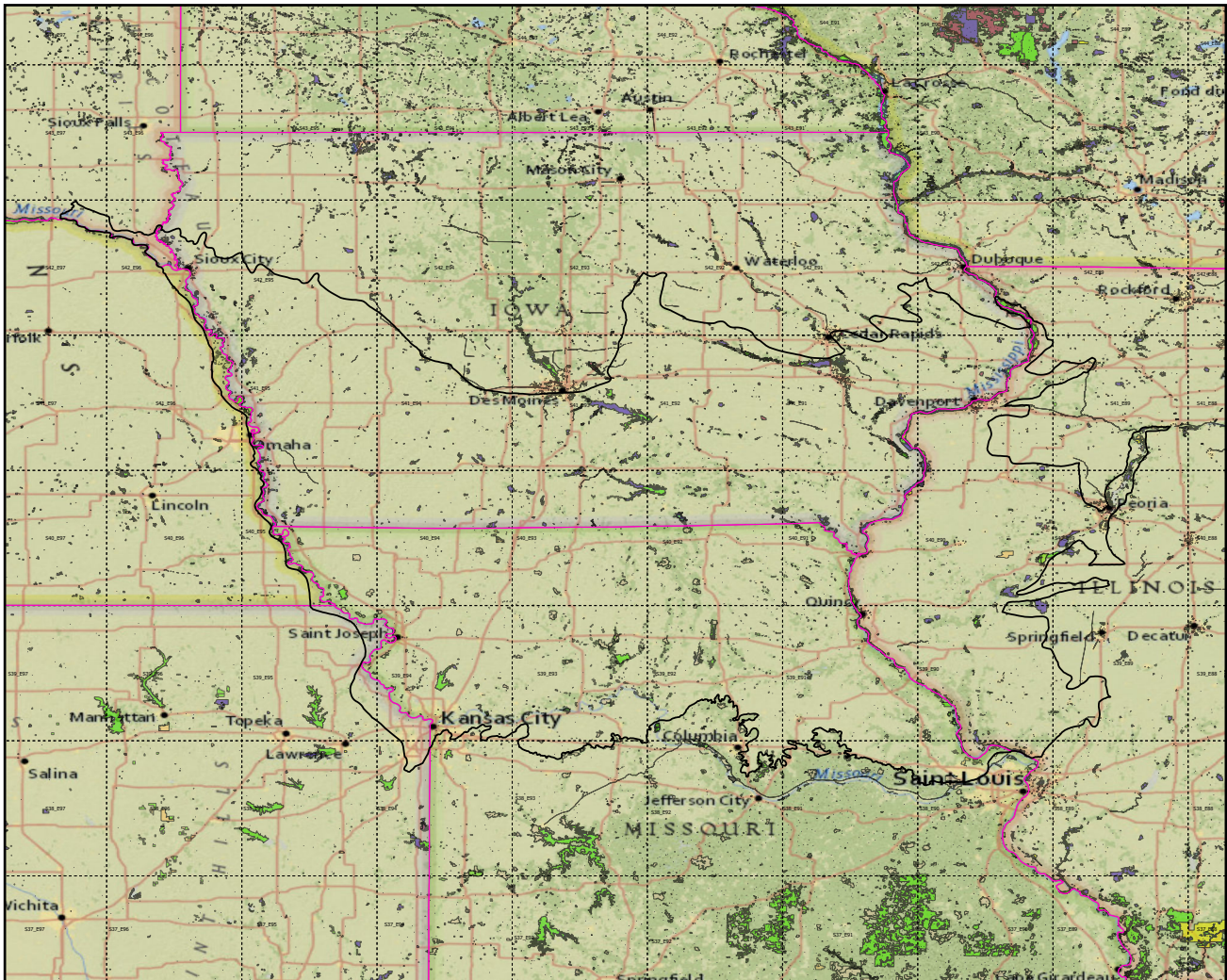
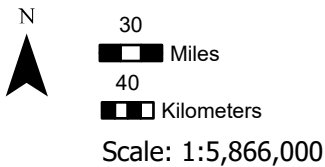


Ecoregions with Protected Areas and Forest Inventory Plots



Center: 93°14'14"W 40°49'48"N  
 States: Iowa; Kansas; Nebraska; South Dakota;



Ecoregion-Section Boundary

State Boundary

Forest Inventory Plots

Counties

1x1 Degree Grid

Protected Areas

American Indian Lands

Federal

Joint

Local Government

Non-Governmental Organization

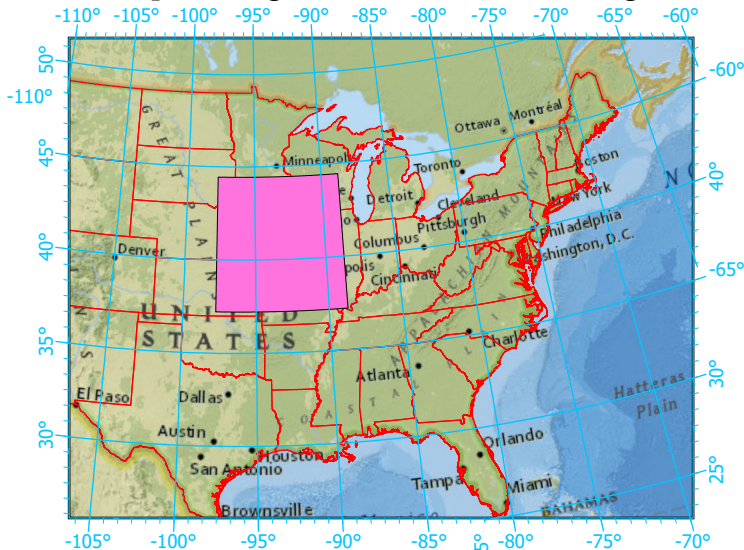
Private

Regional Agency Special District

State

Unknown

Index map (Ecoregion area identified in magenta)



Note: This map page is intended to accompany the forest summary tables, based on the inventory plots shown (approximately). Tables are located at <https://www.fs.fed.us/nrs/atlas/combined/resources/summaries/ecomap/>. Based on the US Forest Service Ecoregional Sections, 2007.